



YAMAMA WATER ENGINEERING

designbuildoperatemaintain

s u s t a i n a b l e w a t e r s o l u t i o n s

Yamama Water Engineering

Retaj Bldg 3rd Floor-No. 316, Al Sadd
P.O Box 91081 - State of Doha, Qatar

Ph: 974 4481 3650
974 4481 0383
Fax: 974 4447 9586



Table Of Contents

CORPORATE PROFILE

Years of Excellence and What We Do Best	Page 2
Our Core Competencies	3
Our People	3
Our Objective	4
Overview	4
Our Supply Chain Partners.....	5

OPERATE & MAINTAIN

Operation & Maintenance Capabilities	6
--	---

PRODUCTSERVICES

Water Treatment Products	7
--------------------------------	---

WATER TREATMENT

Water Treatment Capabilities.....	8
Reverse Osmosis System	9

REFERENCE

Our Customers Example of Reference	10
Design-Build-Operate Water Treatment Project References.....	11-14

CORPORATE
PROFILE

OPERATION &
MAINTENANCE

PRODUCT
SERVICES

WATER
TREATMENT

REFERENCE

Yamama Water Engineering

Years of Excellence and What We Do Best



Yamama Water Engineering is a fully Qatari owned company established in 2003 to provide variety of products and services to Water Engineering Industries in Qatar. Locally-owned group of companies operating in multi-faceted fields. It was founded by Mr. Abdulla Mubarak Al- Dolaimi, a successful entrepreneur, known in the oil sector industry since 1989.

Our company is capably managed by Group Manager, Engr. Waleed Zidan. He is backed by a number of competent workforces, from managers down to rank and files, well-experienced in their respective field of professions.

We've been a partner and a sponsor of many renowned international companies for a long time and have accomplished many large projects around Qatar especially with the government. It values the importance of establishing harmonious working relationship between partners and clients.

Through deeper understanding of the client base needs, and the ability to provide quality and customized services, the group has been enjoying the trust from variety of satisfied clients and partners and is continuously reaping success in Qatar market.



Yamama Water Engineering Company provides the most modern & applicable solutions for the increasing demands on high quality water in Qatar and the region. It is utilizing the concept of water management as a core of the business. Our capacities enable us to design, build, and operate all types of commercial, industrial, medical and private water treatment plants, sewage treatment plants, and pumps.

We are actually a unique partner in the water sector since we are ready and well able to realize any types of turn key projects

We are ready to present our capacity in water treatment and water processing engineering services to your esteemed organization, where we can play the role of distributor, sales and after sales service provider as well as project, contracting partner.



Our Core Competencies

- Support services Group of Companies.
- Design-Build-Operator of water treatment facilities
- Product Technology including chemical dosing equipment, package plants, covers and storage tanks; washwater systems, electrical panels and automated control systems.
- Consultancy services supporting the design and optimisation of water infrastructure systems and project management
- We are one of Middle East largest water filter distributor
- Design services covering treatment process, mechanical, electrical and civil engineering requirements.

Our People

Our primary strength lies in the quality of our people. Their high level of expertise enables us to consistently deliver efficient and effective solutions and services to our client base.

We strongly believe in the principle of building expertise as a continuous process through experiential learning and structured training programmes.

Our concept to completion formula works.

We conceptualize, we design, we consult, we project, we manage, we construct, and we take responsibility from the beginning of the project to final sign off and commissioning.

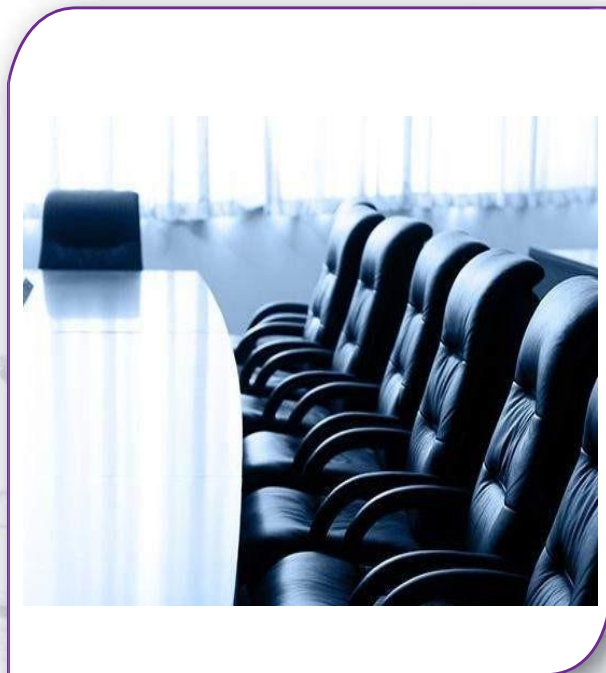
A high degree of technical skills, we also encourage our people to develop their interpersonal, communication and leadership skills to provide our customers with a stronger and more coherent platform

This is an advanced, innovative business model that our client base has enthusiastically embraced.

Measuring Excellence: Our Standards

We continue to seek ways of offering enhanced value to our customers, be that through review of existing standards.

We remain our organization with a flat structure to ensure innovation and ideas can reach our products and service.





Our Objective

The promotion of the development and advancement of the science, art and practice of water conservation and environmental management, especially the treatment of water and waste water.

To provide means for professional intercourse and exchange of ideas between members of the company practising water and environmental management.

To promote support and encourage standards of excellence and integrity.

In addition our commercial lines of water filtration items and our products also have an entire residential line.

Overview

Drinking water has a dramatic impact on the human body, so making sure that it is free of harmful contaminants is extremely important. "Improving water" has always been the main focus and to that, products have been designed, created and evolved as industry knowledge has increased.

All types of businesses around the world, including the food services industry, major airline industry, and the U.S. military trust our products.

The importance of good drinking water in maintaining human health was recognized early in history. However, it took centuries before people understood that their senses alone were not adequate judges of water quality.

The earliest water treatments were based on filtering and driven by the desire to remove the taste and as a result, drinking water treatment systems were designed to reduce turbidity, thereby removing pathogens that were causing typhoid, dysentery and cholera.

The early twentieth century, better protection of water supplies from sewage pollution and simple but effective methods of water treatment (chlorination, sand filtration) had greatly reduced rates of waterborne disease in developed nations.

Water Treatment Processes

The processes and technologies used to remove contaminants from water and to improve and protect water quality are similar all around the world.

The choice of which treatment to use from the great variety of available processes depends on the characteristics of the water, the types of water quality problems likely to be present, and the costs of different treatments.

Filtration

Filtration occurs as the water passes through filters that help remove even smaller particles. One of the oldest and simplest processes used to treat water is to pass it through a bed of fine particles generally sand. This process of sand filtration usually removes fine suspended solid matter as well as some other particles, such as larger microorganisms.

Disinfection

Water is disinfected to kill any pathogens that may be present in the water supply and to prevent them from re-growing in the distribution systems. Without disinfection, the risk from waterborne disease is increased.

The two most common methods to kill microorganisms in the water supply are oxidation with chemicals such as chlorine or ozone or irradiation.



Our Supply Chain Partners

Throughout the years, we have established, developed and nurtured relationships with a number of key suppliers, to ensure that we can consistently offer our valued client base a wide range of projects at the most competitive possible prices.

Our partners include:



A TROJAN TECHNOLOGIES COMPANY



**SHELCO
FILTERS**





Our Supply Chain Partners

Throughout the years, we have established, developed and nurtured relationships with a number of key suppliers, to ensure that we can consistently offer our valued client base a wide range of projects at the most competitive possible prices.

Our partners include:



Multi-method applied geophysics





SUMMARY

- State-of-the-art equipment in all geophysical methods
- > 10 permanent employees



- > 100 available and flexible collaborators for large projects
- Worldwide experience
- Strong research and development of hardware and software

TIMELINE

- 2002 Geo2X Sàrl foundation in Geneva by J. Jenny & J.-M. Frautschi
- 2006 Relocation to Lausanne (VD)
- 2012 Status change to SA
- 2014 AGAP and ISO 9001 certifications
- 2015 ISO 14001 and OHSAS18001 certifications
- 2016 Opening of Swiss-german Geo2X branch in Baar (ZG)

EXPERIENCE AND ACTIVITIES

Established in 2002, Geo2X SA has an acquired specialization in applied geophysics. Our activities were firstly aimed at local surveying, which quickly evolved into vibroseis prospection. Since 2012, our focus has been geotechnical identification through joint geophysical methods.

Our global experience is key to find specific solutions for varied issues (hydrogeology, natural resources, landslides, pollution, etc.) in many environments.

A particular effort is put into research and development of new hardware and software, allowing us to have innovative answers to complex situations.

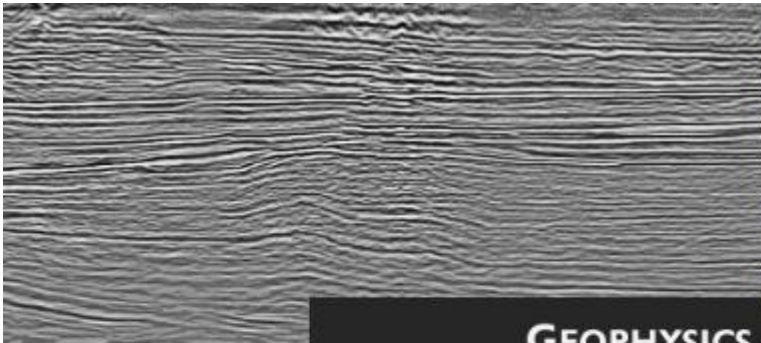
RESOURCES

Our team holds 12 geophysicists, geologists and engineers. When considering large projects, our team can hold up to 120 members.

Client demands are met with quality through exceptional mastery in key software (geophysics and cartography).

Our complete range of equipment meets the highest accurate standards for each geophysical technique.





GEOPHYSICS

DEFINITION

Applied geophysics is a field of Earth Sciences that uses quantitative methods derived from physics to identify buried geological or anthropological structures.

RESULTS

The primary contribution of geophysics is its capacity to provide information on the distribution of given parameters in the ground (seismic velocity, electrical resistivity, etc.).

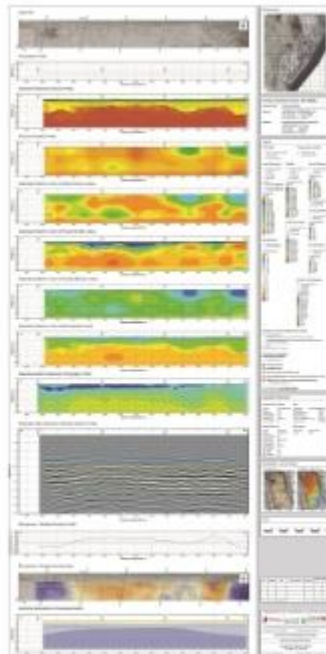
Geophysical methods allow us to create precise geological models at an optimized cost through regionalization of borehole data.

MULTI-METHOD APPLICATIONS

Geological interpretation of a site is constrained through the use of multiple and joint geophysical techniques.

The selected technique depends on the matter and structure to investigate.

This multi-method approach grants the optimization of borehole locations, therefore reducing costs.



METHODS

Reflection seismology

- Geothermal exploration
- Reservoirs
- Stratigraphy, structural
- Faulting

Refraction / MASW

- Geological structures
- Landslides
- Geotechnical parameters

Logs

- Geotechnics
- Stratigraphy

Electric tomography

- Aquifers / Porosity
- Quaternary stratigraphy
- Geological structures

Gravity exploration

- Void detection
- Faulting / alteration
- Geothermal reservoirs

EM - Magnetic exploration

- Buried waste
- Archaeology
- Buried service networks

Georadar

- Void detection
- Archaeology
- Buried service networks



Geo2X
Geophysics & Geology



Geo2X SA
Rue du Centre 6
CH-1377 Oulens-sous-Echallens

Phone: + 41 21 881 48 00
info@geo2x.com

ISO 9001, 14001, OHSAS 18001
AGAP Qualité

Geo2X AG Baar
Mühlegasse 18M
CH-6340 Baar

Phone: + 41 41 760 01 25
baar@geo2x.com



WELLJET®

With their local Partner

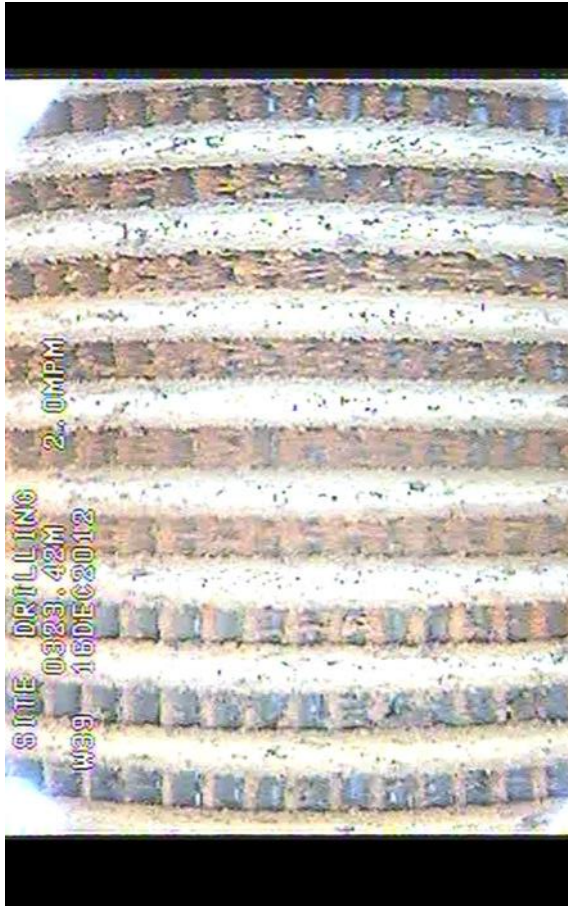


Testing WellJet tool operation, pressure > 10,000 psi. Note laminar flow.

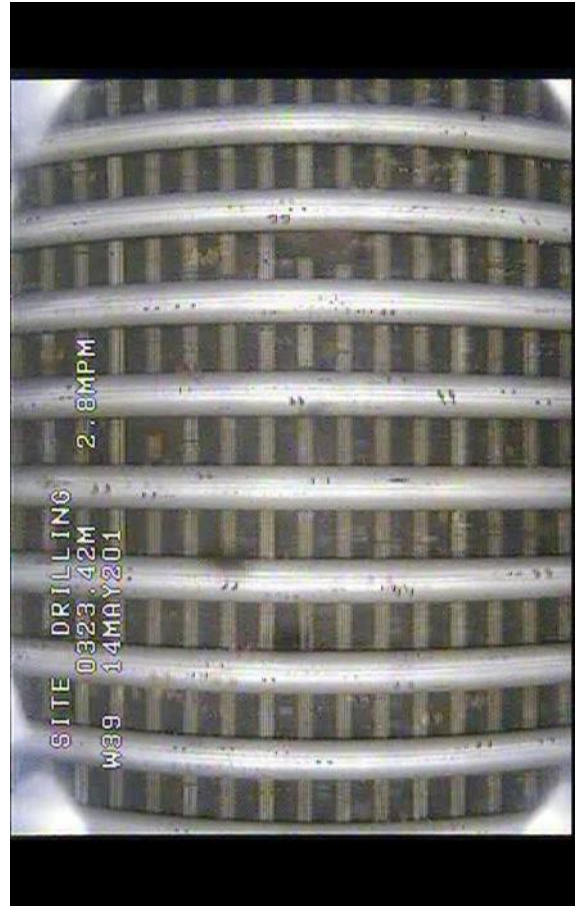


Airlifting after jetting: formation sand removed from the gravel pack by WellJet.

BEFORE



AFTER





Operation & Maintenance

Yamama Water Engineering is significantly a water distributor in Qatar.

Part of our service includes reminders on when your system requires consumables, re-testing of water quality, and equipment maintenance.

We maintain a full fleet of water treatment services to keep your system working properly. Our staffs are fully trained in all of the major water treatment systems and attend ongoing training for the technology being developed today.

Based on your specific water sample and needs, our technicians will professionally install a water system designed for you, within your budget.

Capabilities

We carry a complete line of water filtration system consumables on many of the major brands.

We operate and maintain an extensive network of water supply systems, potable and industrial water treatment plants, and municipal and commercial & industrial sector & wastewater treatment plants.

Provide 24 operations and maintenance services and support our global clientss.

Compliance with laws & regulations with special emphasis on health safety and environmental aspects

Cost efficiency and effectiveness



Service & Repair Functions

Supported by our Operation and Maintenance (O&M) teams, we provide a service everyday

With Yamama Water Engineering, you can be safe in knowing that your emergency and routine service needs will be maintained.

We will always have a solution for every application



Water Treatment Products



Everpure, USA

Everpure is a worldwide leader in quality, reliability and innovation, with facilities across the globe. That's why experts in the know like the Starbucks, Coca-Cola Company, Walt Disney World, United Airlines®, Winnebag, even the U.S Navy and Air Force One use Everpure for their water filtration needs.



Pentair Water, USA

Pentair is a global water, fluid, thermal management, and equipment protection partner with industry leading products, services, and solutions.



Viqua - Trojan Technologies, Canada

VIQUA is a global leading brand for residential and light commercial water purification systems, making tap water safe for millions of people around the world. Sterilight and UVMAX ultraviolet water filtration systems are in over 100 countries for installations, protecting your family, your home, and commercial ventures, such as: restaurants, hospitals, schools, hotels, offices, coffee shops, and more.



Sonitec - Vortisand, Canada

Vortisand is a high performance automatic backwashable cross-flow microsand filter which filters down to the submicron level: 10 to 50 times finer than other media filters. Vortisand combines a cross-flow condition and sand filtration in the same vessel. The technology was designed for various applications such as HVAC side-stream filtration, process water, rain-harvesting water and more.



Shelco Filter, USA

Shelco has used state-of-the-art research and development to design high-quality filters that increase performance and reduce costs.

MicroGuardian™	Industrial Filter Housings
MicroSentry™	Industrial Filter Cartridges
MicroVantage™	High Purity and Sanitary Housings
MicroVantage™	High Efficiency and Membrane Filter Cartridges
MicroSentry™	Bag housings and filter bags



Water Treatment Capabilities



Utilities Sector

Water treatment technologies which have a proven track record in the utility sector. Over a year's Yamama Water Engineering expertise to design, supply, install, commission and operate a variety of water treatment technologies. Applications include pre-treatment, ash mixing, coagulation, clarification, gravity filtration, sedimentation, nitrate removal, disinfection and chemical dosing systems.

Food & Beverage Sector

Yamama Water Engineering offers a range of water treatment technologies which have a proven track record in the food and beverage sector. These include Pre-treatment, filtration softening, UV disinfection, chlorine destruction, ozone, reverse osmosis, demineralisation, taste and odour removal and laboratory water production.



Pharma & Life Science Sector

Yamama Water Engineering offers a range of water treatment technologies which have a proven track record in the Pharma and life science sectors, e.g. reverse osmosis, electro-deionisation, laboratory water, UV technology, ozone, demineralisation, water filtration, softening, chlorine destruction, ozone destruction and nano/ultra filtration.

Industrial & Commercial Sector

Yamama Water Engineering offers a range of water treatment technologies which have a proven track record in the power and microelectronics sectors. These include demineralization, reverse osmosis, water softening, pre-treatment, chlorine destruction, laboratory water, recycling system & waste water treatment.





Reverse Osmosis System



Brackish Water

Yamama Water Engineering offers Brackish well water desalination that used to produce good quality water.

- **Mobility** - The containerized water treatment system may be used to treat water at different locations, for example in a construction site or a camp.
- **Reduction of civil work** - Will not require a room or space for the system.
- **The system is readily fabricated and tested** - Capable of withstanding harsh environment and very hot condition
- **Suitable for the hot Gulf area, Desert or Mediterranean countries.**

Seawater Desalination

We offer a wide range of sea water reverse osmosis desalination systems. Customer can select from the small systems for marine applications, to systems with production capacity up to 1000 cubic meters per day.



Reverse Osmosis Membranes

The range of ultrafiltration elements, both in pressurized and submerged configurations, is employing a PVDF hollow-fiber, out-in concept and serves in numerous water treatment units around the world. Membrane modules for membrane bioreactors are using flat-sheet PVDF membranes and can be configured for gravity-driven or suction-controlled operation.

Membrane Spare Parts

This innovative membrane module was developed with polymer science and the membrane fabrication technologies.





Our Customers | Example of our Reference



Yamama Water Engineering is engaged in sales and installation of water filters and R.O Systems to fine for the following:

- Restaurants
- Hotels
- Coffee shops
- Hospitals
- Municipalities
- Universities
- Industrial
- Laundries
- Contracting Companies

- We are strong **Commercial Outliers** on a number of Products.
- Our Products often offer the **best Whole Life Cycle Cost in Use**.
- We have a leading **After Sales Service** - "we don't cut & run".

Water Technology and support from one trusted source

Yamama Water Engineering are passionate about making water work for you more efficiently. Whatever your requirements, we have a technical and customer support solution for your needs.

Yamama Water Engineering offer a professional site survey at no cost for contract quotations or tender proposals. We commission our products and our manufacturers' equipment.

Turnkey Project Management or Supply Only

When it's time to upgrade or replace your equipment, we offer our own pre-engineered water treatment systems and plant.

You can choose either supply only, or ask our dedicated project management team to take responsibility for everything from design to hand-over.

You can rely on the team not only to save you money but also to deal with your requirements quickly and efficiently, including full compliance and safety regulations.

Better Value Maintenance

Good preventative maintenance will contribute to your company's profitability by improving equipment life, When you opt for Yamama Water Engineering planned maintenance programmes, your overall maintenance will cost significantly less than any 'quick fix' approach. moreover, your equipment life and uptime will be extended, providing further cost efficiencies and long-term peace of mind.



Design-Build-Operate



References Projects

REFERENCE



Reverse Osmosis System

Client : Hamad Medical Corporation
Completed : 2013 and ongoing

This project by Yamama Water Engineering was responsible for the full supply commissioning testing and installation.

This system incorporates a programmable micro-processor which continuously monitors product water quality, and initiates the various plant sequences.



Water Treatment Chemical

Client : Hamad Medical Corporation
Completed : 2014 and ongoing

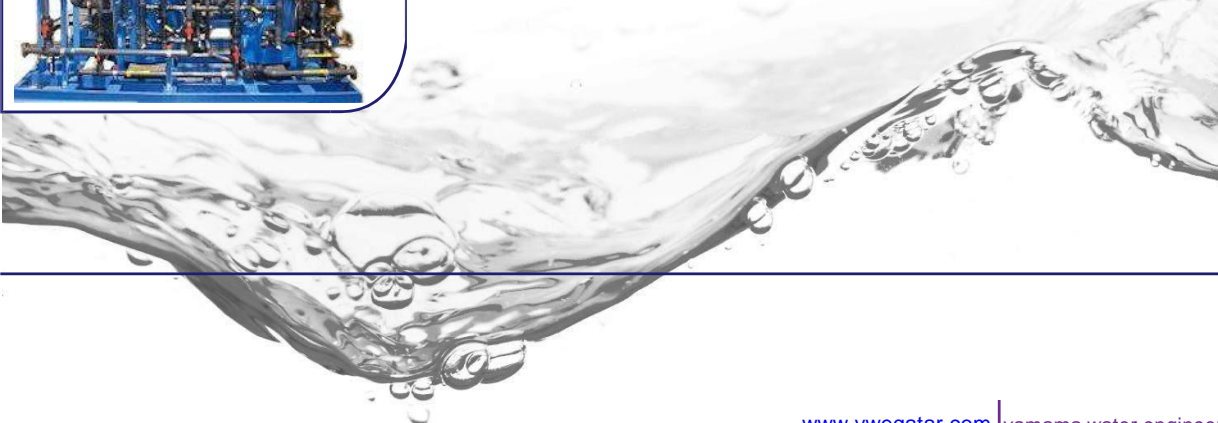
Yamama Water Engineering was responsible for the full supply of water treatment chemical products that are complemented by a full range of spares and consumables. We also supply chemicals to control corrosion deposits and bacteria.



Deionizer Water System + Dosing System

Client : Qatar Acid
Completed : 2013

Yamama Water Engineering was responsible to supply, installation and commission and other services comprehensive range of high quality water treatment plant and equipment to the highest rigorous standards of compliance and quality.



Design-Build Operate

Project References



Bottled Water Line

Client : Khazzan Qatar
Completed : 2008 and ongoing

This project of Yamama Water Engineering was responsible to supply carbon cartridges and sediment filtration as well as special application filters for lead reduction or cyst removal including RO,sand filter,UV system,ozone and mineral dosing system.



Everpure Water Filters

Client : Basco Qatar
Completed : 2013 and ongoing

This project of Yamama Water Engineering was responsible to supply and install everpure filtes for coffee machines,ice maker, oven steamer and water softener for laundry.



Residential and Food Service Water Filtration

Client : Qatar Food Americana, Al Mana Group, Integral Food Services, Integral Food Concept, Premiere Food Services, Ayyad Group, Alayan Group, Aida Trading, WHotel, Four Season Hotel, Ezdan Village, Katara Hospitality, Jawad Business Group, Azadea, Dareen International, Alkhan Group, Al Bandary Group, Silver group,Oryx Food Group for Food Services, Silver Group,Sterling Group, La Cigale Hotel, Lerida Group, Foodvest, Qatar Star, United Business Development, Kitchenco, Universal Business Limited, Al Mannai Hospitality, Global Hospitality & Restaurant Development, Sheraton Hotel, Tadmur Trading, Qatar News Agency, Ali Bin Ali Group, Cocktail Mandarine, Cold Stone, Marwa Water, Alemarah Trading, Carribou Coffee, International Food Group,Grand Heritage Hotel, Al Mana Luxury, International House (Big Bear Chopper), Qatar Technical Services, The British Company, Gulf Industries,Moevenpick Hotel La Nouvelle, Al Sadd Ice Plants,Metito, Lenotre Paris, International Gulf Trading,Electrocity,Al Mourjan and etc.

Design-Build-Operate

References Project



Industrial Water Filters

Client : Qatar Fuel (WOQOD)

This project of Yamama Water Engineering was responsible to supply and install industrial water filtration system with UV System in all branch of WOQOD petrol station.



Commercial Water Filtration

Client : Sheikh Mishal Bin Hamad Khalifa

This project of Yamama Water Engineering was responsible to supply and installation of RO system, sand filters and UV System



Client : Primary Health Care Corporation
Completed : Ongoing

This project of Yamama Water Engineering was responsible to supply and install a Pump Kit, Sand filter with UV system for **15 Primary Health Centers first stage**

REFERENCE



Design-Build-Operate References Project



Dosing System

Client : Arab Qatari Poultry

This project of Yamama Water Engineering was responsible to supply and install chlorine dosing system for disinfection to maintain fresh, clean water for poultry.



Residential Water Filtration

Client : Mowasalat

This project of Yamama Water Engineering was responsible to supply and install Everpure filters including UV System for drinking water.



Pump Kit + Sand Filter + Ultraviolet Disinfection System

Client : Carrefour

This project of Yamama Water Engineering was responsible to supply and install a Pump Kit, Sand filter with UV system and Carbon filter for all branch of Carrefour.





Design-Build-Operate References Project



Borehole evaluation

REFERENCE

Filed Hydro Test





Project

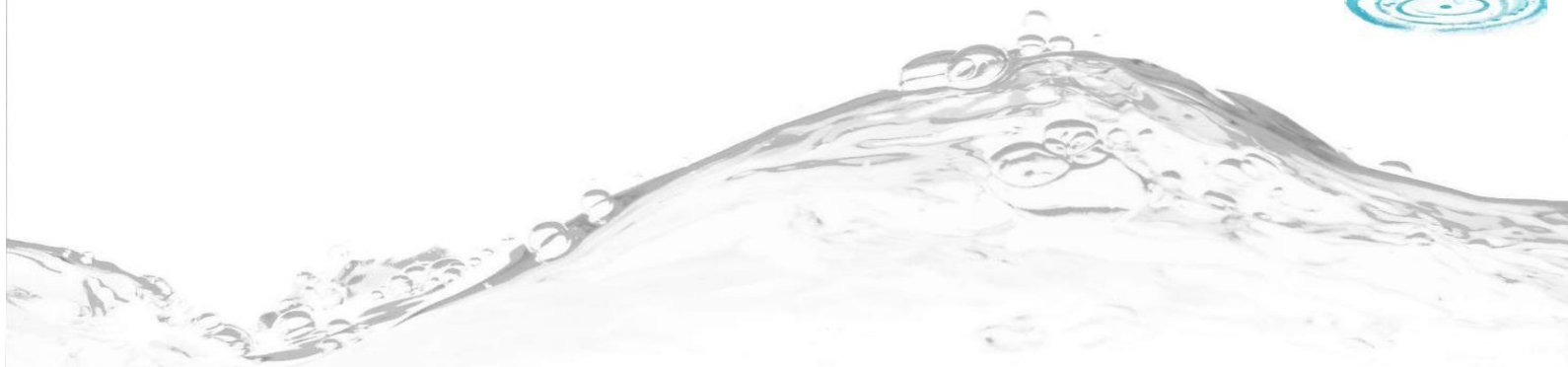
4 Season Hotel



Multi-Media System



Irrigation System







EXCELLING IN WATER SERVICES

Design build operate maintain

s u s t a i n a b l e w a t e r s o l u t i o n s

Yamama Water Engineering

Retaj Bldg 3rd Floor-No. 316, Al Sadd
P.O Box 91081 - State of Doha, Qatar

Ph: 974 4481 3650
974 4481 0383
Fax: 974 4447 9586