



EV9259-24

QL3B Single Head

Filter head exclusively for Everpure replacement cartridges



QL3B Single Head: EV9259-24

BENEFITS

Commercial quality filter head is designed exclusively to fit Everpure filter cartridges

Includes built-in water shut off valve

Includes mounting bracket and screws

Solid durable construction is ideal for foodservice and vending applications

All wetted parts have passed NSF extraction tests

Engineered for durability, strength and longevity

Will not corrode

INSTALLATION TIPS

Change cartridges on a regular 6 month preventative maintenance program

Change cartridges when capacity is reached or when pressure decreases

Always flush the filter cartridge at time of installation and cartridge change

OPERATION TIPS

Change cartridges on a regular 6 month preventative maintenance program

Change cartridges when capacity is reached or when pressure decreases

Always flush the filter cartridge at time of installation and cartridge change

APPLICATION/SIZING

For foodservice, vending and OCS applications

Capacity: varies according to filter cartridge used

QL3B Single Head

SPECIFICATIONS

Dimensions:

3.0"H x 3.75"W x 3.5"D

No electrical connection required

WARRANTY

Everpure water treatment systems (excluding replaceable elements) are covered by a limited warranty against defects in material and workmanship for a period of five years after date of purchase. Everpure replaceable elements (filter cartridges and water treatment cartridges) are covered by a limited warranty against defects in material and workmanship for a period of one year after date of purchase. See printed warranty for details. Everpure will provide a copy of the warranty upon request.

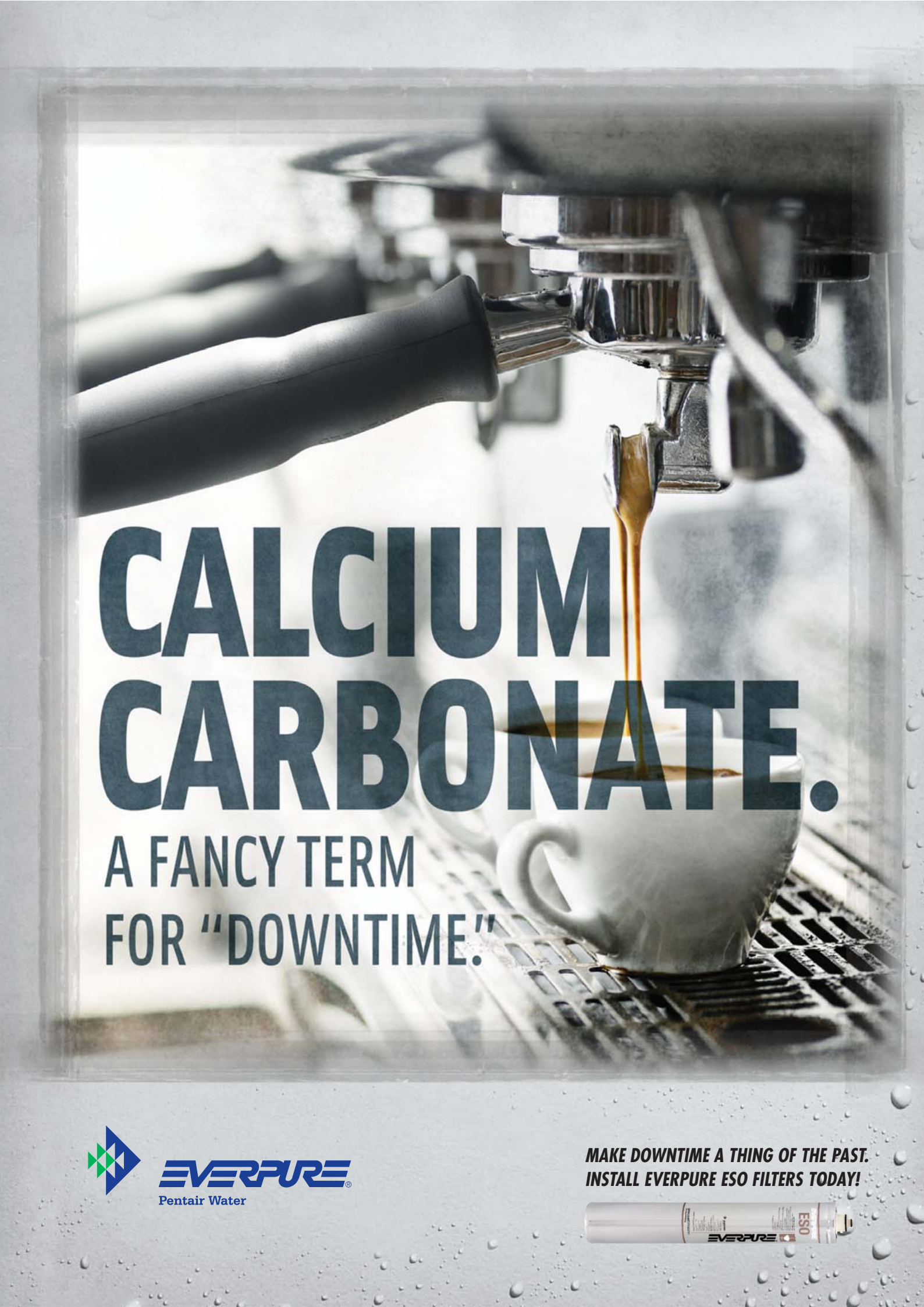


EVERPURE, LLC
1040 Muirfield Drive
Hanover Park, Illinois 60133
Toll Free (800) 323-7873
Tel (630) 307-3000
Fax (630) 307-3030
<http://www.everpure.com>

In Europe:
N.V. EVERPURE (EUROPE) S.A.
INDUSTRIEPARK WOLFSTEE
TOEKOMSTLAAN 30
B-2200 HERENTALS
BELGIUM
TEL 32 -14-283500
FAX 32-14-283505

In Japan:
EVERPURE JAPAN LLC
HASHIMOTO MN BLDG. 7F
3-25-1 HASHIMOTO SAGAMIHARA-SHI
KANAGAWA 229-1103
JAPAN
TEL 81-(0)42-775-3011
FAX 81-(0)42-775-3015

**Everpure, LLC
1040 Muirfield Drive
Hanover Park, IL 60133
Ph: 630-307-3000 Fax: 630-307-3030**



CALCIUM CARBONATE.

A FANCY TERM
FOR "DOWNTIME!"



EVERPURE
Pentair Water

**MAKE DOWNTIME A THING OF THE PAST.
INSTALL EVERPURE ESO FILTERS TODAY!**



ANOTHER COFFEE THE TRUE COST OF UNFILTERED

Unfiltered water supplies lead to blocked vending systems and water quality related poor tasting hot drinks; the very two things that you do not want to be troubled by when you are running a cafe or similar hot drinks vending operation.

These issues are eliminated, however, when you install the latest range of Everpure ESO filters.

EVERplus ESO filters are ground-breaking new products that combine water softening with water filtration and pH control to achieve a cost effective, compact and reliable method of controlling hardness levels in water.

- Supplied in traditional Everpure aluminium housing
- Fits into ALL existing Everpure filter heads
- Significantly improves taste and reduces odour
- Reduces minerals such as calcium and magnesium
- PH levels controlled throughout the life of the filter

EVERplus OPERATION

ESO filters are ion exchange softening products, which work in three stages:-

1. Incoming water is initially directed through the primary and secondary process stage, with a small volume being diverted via a bypass valve.
2. Treated water passes through an ion exchange process to control and manage the pH level of water and to ensure that scale cannot be formed.
3. In the final process stage, all bypass and treated water is filtered through a carbon filter to remove Chlorine, off taste and odour.

Furthermore these filters are a 'one-way' ion exchange system, meaning that they do not need regenerating, simply replace the cartridge as required.

Cartridges are available in two different sizes:-

- ESO6 is a 16" cartridge with a total exchange capacity of 265,000ppm
- ESO7 is a 21" can with a capacity of 344,000ppm

EVERplus ESO filters - optimum water quality for hot drink vending systems.



FREE BREAK! WATER.



FILTER / CARTRIDGE SPECIFICATIONS

Filter / cartridge specifications	ES06	ES07
Replacement cartridge	EV9607-10	EV9607-25
Overall dimensions	15" (h) x 3.25" (diameter)	20.75 x 3.25"
Service Flow rate	Max 1.9 lpm (0.5 gpm)	Max 1.9 lpm (0.5 gpm)
Treatment capacity	1780 litres @ 150 ppm (470 gals @ 150 ppm)	2300 lpm @ 150 ppm (600 gals @ 150 ppm)
Pressure requirements	0.7 - 8.6 bar non shock (10-125 psi) non shock	0.7 - 8.6 bar non shock (10-125 psi) non shock
Temperature	2 - 38 °C (35 - 100 °F)	2 - 38 °C (35 - 100 °F)

No electrical connections are required

RECOMMENDED USAGE RATES

Single cartridge changeout table:

Water Hardness (ppm Alkalinity)	ES06		ES07	
	Changeout (Litres)	# 150ml cups	Changeout (Litres)	# 150ml cups
40	6625	44167	8600	57333
60	4417	29444	5733	38222
80	3313	22083	4300	28667
100	2650	17667	3440	22933
120	2208	14722	2867	19111
140	1893	12619	2457	16381
160	1656	11042	2150	14333
180	1472	9815	1911	12741
200	1325	8833	1720	11467
220	1205	8030	1564	10424
240	1104	7361	1433	9556
260	1019	6795	1323	8821
280	946	6310	1229	8190
300	883	5889	1147	7644
320	828	5521	1075	7167
340	779	5196	1012	6745
360	736	4907	956	6370

PENTAIR WATER BELGIUM bvba
Industriepark Wolfstee
Toekomstlaan 30
B-2200 Herentals
Belgium
TEL: 32-14-283500
FAX: 32-14-283505
sales@everpure-europe.com

PENTAIR WATER UK
Unit 5, Sterling Park
Gatwick Road, Crawley
West Sussex RH10 9QT
United Kingdom
TEL: +44 (0) 845 003 9972
FAX: +44 (0) 1293 421880
sales@everpure-europe.com

PENTAIR WATER GERMANY GmbH
Abteilung Everpure
Wiesenstrasse 6
D - 64347 Griesheim
Germany
TEL: 0049.6155.87.74.26
FAX: 0049.6155.87.74.28
sales@everpure-europe.com

PENTAIR WATER ITALY S.r.l.
Sales Department
Via Brughiera 1
I - 20010 Pregnana M. se (MI)
Italy
TEL: 0039.02.932.71.11
FAX: 0039.02.93.27.11.54
sales@everpure-europe.com

PENTAIR WATER MIDDLE EAST
Office no. 404, Al Buhaira Building,
Corniche Street
P.O. Box 32789, Sharjah
United Arab Emirates
TEL: 00971 6 572 0552
FAX: 00971 6 572 0553
sales@everpure-europe.com

PRODUCT DEVELOPMENT

EVERPURE reserves the right to alter specifications without prior notice. This technical information leaflet does not constitute a contractual offer.

INSTALLATION TIPS

- Choose mounting location suitable to support the full weight of the system when operating.
- Use 3/8" water line.
- Install vertically with cartridge hanging down.
- Allow 2 1/2" clearance beneath the cartridge for easy removal and replacement.
- Flush ESO cartridge by running water through the filter at full flow for five minutes.

OPERATION TIPS

- Change ESO cartridge when its pre-calculated water volume has been reached, or at least once a year.
- Performance will be reduced if recommended service flow rate is exceeded.
- Always flush the filter cartridge at time of installation and cartridge change.

APPLICATION / SIZING

For speciality coffee, espresso and iced tea applications:

	ES06	ES07	
CAPACITY	265,000	344,000	single cartridge configuration
ppm Alkalinity	530,000	688,000	twin cartridge configuration
	795,000	1,032,000	triple cartridge configuration

Cartridge ppm Alkalinity Capacity ÷ ppm Alkalinity of influent water = Total product water (Litres)

IMPORTANT The contaminants or other substances removed or reduced by this drinking water system are not necessarily in your water. Do NOT use with water that is microbiologically unsafe or of unknown quality without adequate disinfection before or after the system. Systems certified for cyst reduction may be used with disinfected water that may contain filtrable cysts.

WARRANTY Everpure water treatment systems (excluding replaceable elements) are covered by a limited warranty against defects in material and workmanship for a period of five years after date of purchase. Everpure replaceable elements (filter cartridges and water treatment cartridges) are covered by a limited warranty against defects in material and workmanship for a period of one year after date of purchase. See printed warranty for details. Everpure will provide a copy of the warranty upon request.



DISTRIBUTOR

Yamama Water Engineering
+974 44813650 | 44810383
www.yweqatar.com
info@yweqatar.com
Doha, Qatar

www.everpure.com

ask anyone with a
water softener,
they'll tell you they'd never
be without one again !

EVERPURE EUROCC AUTOMATIC WATER SOFTENERS EUROCC-10 / EUROCC-15 / EUROCC-30



Our EuroC-10 / EuroC-15 and EuroC-30 models are available in timer or meter controlled versions (see back page for specifications). The timer controlled models are both automatic and cost efficient. They are based on a highly reliable time system that has been tried and tested for over 10 years; You set two simple controls and the softener does the rest. It will automatically regenerate (every two days usually) during the night, when there is no soft water demand.

The meter controlled models use a sophisticated, built-in meter system to accurately match the regeneration process to water usage. This ensures that the supply of softened water meets even the most varying demand. When you are away and using no water, for example, there will be no regeneration.

Alternatively, if you have guests, and the demand increases, the process will be more frequent. Matching supply to demand this way saves water and can halve the amount of salt used.

Unlike many softeners, the EuroC softeners have been carefully designed to avoid complex user controls. And despite being fully automatic they are both extremely reliable and simple to operate.

Choosing between the two different sizes depends on the number of residents using the water supply and the hardness of your water. Other factors to consider are budget and the space available. If you have any doubts, we will be happy to advise.

it can cost more to put up
with hard water,
than to buy and run an
EuroC Softener



How they work:

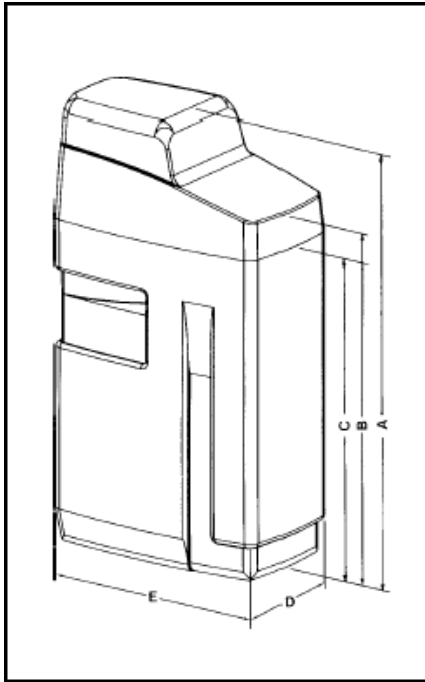
EuroC softeners contain a resin that removes (by a process known as "ion exchange") the magnesium and calcium deposits that cause water to be hard. Periodically the resin needs to be regenerated by flushing with salt water. This is done automatically, all you have to do is add inexpensive tablet salt once a month. The salt does not enter the water supply, of course. It is simply flushed away by the softener once it has finished its job of regeneration the resin.



TECHNICAL INFORMATION

Electrical Requirements : 240 V / 50Hz; 24V operation

Drainage Requirements : drainline 15 mm; overflow 10mm



Total Hardness				Ion exchange capacity in liters		
°dH	°Fr	Ppm	°Clark	EUROC 10-E	EUROC 15-E	EUROC 30-E
9	15	150	10.5	4000	6000	12000
12	20	200	14.0	3000	4500	9000
15	25	250	17.5	2400	3600	7200
18	30	300	21.00	2000	3000	6000
21	35	350	24.5	1700	2570	5140
24	40	400	28.0	1500	2250	4500
29	50	500	35.0	1200	1800	3600

Dimensions in mm

	EUROC 10-E	EUROC 15-E	EUROC 30-E
Height	673	1006	1127
Width	559	559	559
Depth	316	316	316
Weight	18.5 kg	25.5 kg	43.5 kg

Electronic Valve 5600 SE

Regeneration Cycles:

1. Preliminary rinse
2. Backwash
3. Brine & slow rinse
4. Rapid rinse
5. Setting rinse
6. Brine refill
7. Service
8. Programming instructions : see installation guide





EV9437-10

High Flow CSR Quad-MC² System

Delivers premium quality water for combination applications



High Flow CSR Quad-MC² System: EV9437-10

MC² Replacement Cartridge: EV9612-56

EC210 Prefilter Cartridge: EV9534-26

SS-IMF Cartridge: EV9799-32

BENEFITS

One system provides premium quality water to high flow fountain, coffee and ice machines

New and improved Micro-Pure II media inhibits the growth of bacteria

Reduces chlorine taste and odor and other offensive contaminants that can adversely affect the taste of beverages

Precoat submicron technology reduces dirt and particles as small as 1/2 micron in size and reduces health contaminants such as cysts

Increases the overall efficiency of foodservice equipment

20" prefilter captures larger dirt particles

SR-X with SS-IMF cartridge inhibits scale buildup in ice machines and coffee brewers

Sanitary cartridge replacement is simple, quick and clean. Internal filter parts are never exposed to handling or contamination

NSF Certified under NSF/ANSI Standards 42 and 53

INSTALLATION TIPS

Choose a mounting location suitable to support the full weight of the system when operating

Use 3/4" water line

Fountain equipment connections are made to the outlet part of the system before the SR-X system

Coffee brewer and ice machine connections are made after the SR-X feeder; a tee is required

Install vertically with cartridges hanging down. Allow 2-1/2" clearance below the cartridge for easy cartridge replacement

Flush cartridges by running water through flushing valve for five minutes at full flow

OPERATION TIPS

Change cartridges on a regular 6 month preventative maintenance program

Change cartridges when capacity is reached or when pressure falls below 10 psi

Change SS-IMF cartridge before Hydroblend™ compound is completely used up

Change prefilter cartridge when excessively dirty

Always flush the filter cartridge at time of installation and cartridge change

APPLICATION/SIZING

For multiple equipment and combination applications

High volume installations

Up to 4 carbonators combined with a 4 pot coffee brewer and 1,200 lb. ice machine

Rated Capacity: 36,000 gallons

High Flow CSR Quad-MC² System

SPECIFICATIONS

Overall Dimensions:
25.69"H x 34"W x 6.75"D

Inlet connection: 3/4"

Outlet connection: 3/4"

Service Flow Rate:
Maximum 6.7 gpm (25.4 Lpm)

Rated Capacity: 36,000 gallons

Pressure Requirements:
10 - 125 psi (0.7 - 8.6 bar), non-shock

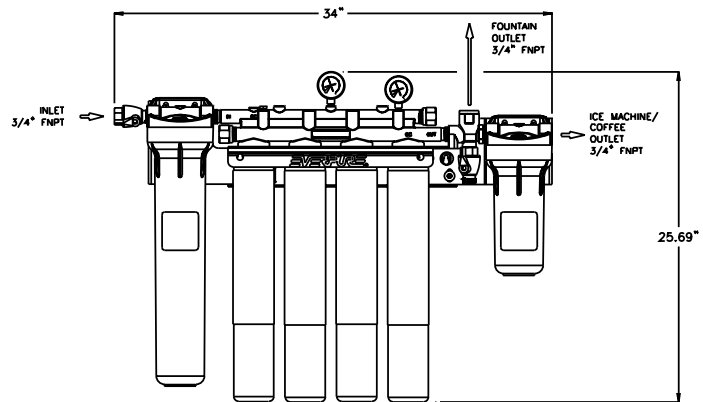
Temperature: 35 - 100°F (2 - 38°C)

No electrical connection required

Shipping Weight: 43 lbs.

Operating Weight: 58 lbs.

The contaminants or other substances removed or reduced by this drinking water system are not necessarily in your water. Do not use with water that is microbiologically unsafe or of unknown quality without adequate disinfection before or after the system. Systems certified for cyst reduction may be used with disinfected water that may contain filterable cysts.



WARRANTY

Everpure water treatment systems (excluding replaceable elements) are covered by a limited warranty against defects in material and workmanship for a period of five years after date of purchase. Everpure replaceable elements (filter cartridges and water treatment cartridges) are covered by a limited warranty against defects in material and workmanship for a period of one year after date of purchase. See printed warranty for details. Everpure will provide a copy of the warranty upon request.



System Tested and Certified by NSF International against NSF/ANSI Standard 42 and 53 for the reduction of:

Standard No. 42: Aesthetic Effects
Chemical Unit
Taste and Odor Reduction
Chlorine Reduction
Mechanical Filtration Unit
Particulate Reduction, Class I:
99.9+% reduction of particles
one-half micron and larger in size
Standard No. 53: Health Effects
Mechanical Filtration Unit
Turbidity Reduction
Cyst Reduction
Asbestos Reduction



EVERPURE, LLC
1040 Muirfield Drive
Hanover Park, Illinois 60133
Toll Free (800) 323-7873
Tel (630) 307-3000
Fax (630) 307-3030
<http://www.everpure.com>

In Europe:
N.V. EVERPURE (EUROPE) S.A.
INDUSTRIEPARK WOLFSTEE
TOEKOMSTLAAN 30
B-2200 HERENTALS
BELGIUM
TEL 32-14-283500
FAX 32-14-283505

In Japan:
EVERPURE JAPAN LLC
HASHIMOTO MN BLDG. 7F
3-25-1 HASHIMOTO SAGAMIHARA-SHI
KANAGAWA 229-1103
JAPAN
TEL 81-(0)42-775-3011
FAX 81-(0)42-775-3015

Everpure, LLC
1040 Muirfield Drive
Hanover Park, IL 60133
Ph: 630-307-3000 Fax: 630-307-3030



EV9324-02

Insurice Twin-I 2000 System

Delivers premium quality water for ice applications



Insurice Twin-I 2000 System: EV9324-02

I 2000 Replacement Cartridge: EV9612-21

BENEFITS

- Reduces ice machine problems caused by scale build-up from dirt and dissolved minerals
- Reduces chlorine taste and odor and other offensive contaminants
- Self-contained scale inhibitor feed keeps ice machines functioning at full capacity
- Reduces maintenance and service costs by reducing scale and clogging of distribution lines, evaporator plate and pump
- Precoat submicron technology reduces dirt and particles as small as 1/2 micron in size
- Reduces health contaminants such as asbestos fibers and Cryptosporidium and Giardia cysts
- Manifold features water shut off, flushing valve and outlet pressure gauge
- Sanitary cartridge replacement is simple, quick and clean. Internal filter parts are never exposed to handling or contamination
- NSF Certified under NSF/ANSI Standards 42 and 53

INSTALLATION TIPS

- Choose a mounting location suitable to support the full weight of the system when operating
- Never use saddle valve for connection
- Use 3/4" water line
- Do not connect system to water-cooled condenser
- Install vertically with cartridges hanging down and allow 2-1/2" clearance below the cartridge for easy cartridge replacement
- Flush cartridges by running water through system for five minutes at full flow

OPERATION TIPS

- Change cartridges on a regular 6 month preventative maintenance program
- Change cartridges when capacity is reached or when pressure falls below 10 psi
- Service flow rate must not exceed 3.34 gpm
- Always flush the filter cartridge at time of installation and cartridge change

APPLICATION/SIZING

- For ice machine applications
- Most cubers up to 1,450 lbs./day
- Most flakers up to 2,200 lbs./day
- Rated Capacity: 18,000 gallons

Insurice Twin-I 2000 System

SPECIFICATIONS

Overall Dimensions:
25.26"H x 16.6"W x 5.5"D

Inlet connection: 3/4"

Outlet connection: 3/4"

Service Flow Rate:
Maximum 3.34 gpm (12.6 Lpm)

Rated Capacity: 18,000 gallons

Pressure Requirements:
10 - 125 psi (0.7 - 8.6 bar), non-shock

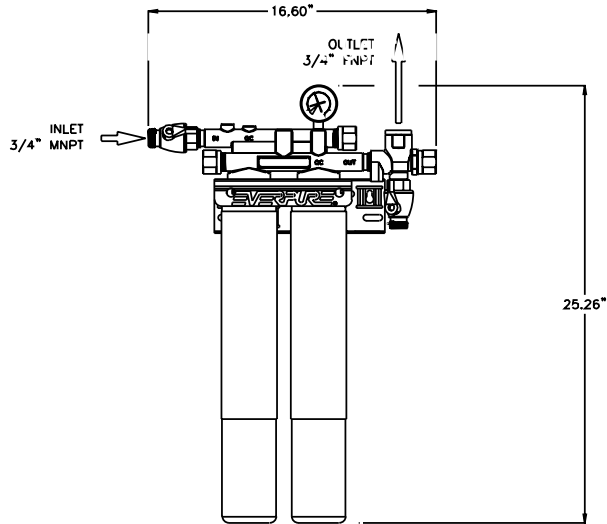
Temperature: 35 - 100°F (2 - 38°C)

No electrical connection required

Shipping Weight: 12 lbs.

Operating Weight: 18 lbs.

The contaminants or other substances removed or reduced by this drinking water system are not necessarily in your water. Do not use with water that is microbiologically unsafe or of unknown quality without adequate disinfection before or after the system. Systems certified for cyst reduction may be used with disinfected water that may contain filterable cysts.



WARRANTY

Everpure water treatment systems (excluding replaceable elements) are covered by a limited warranty against defects in material and workmanship for a period of five years after date of purchase. Everpure replaceable elements (filter cartridges and water treatment cartridges) are covered by a limited warranty against defects in material and workmanship for a period of one year after date of purchase. See printed warranty for details. Everpure will provide a copy of the warranty upon request.



System Tested and Certified by NSF International against NSF/ANSI Standard 42 and 53 for the reduction of:

Standard No. 42: Aesthetic Effects
Chemical Unit
Taste and Odor Reduction
Chlorine Reduction
Mechanical Filtration Unit
Particulate Reduction, Class I:
99.9+% reduction of particles
one-half micron and larger in size
Standard No. 53: Health Effects
Mechanical Filtration Unit
Turbidity Reduction
Cyst Reduction
Asbestos Reduction



EVERPURE, LLC
1040 Muirfield Drive
Hanover Park, Illinois 60133
Toll Free (800) 323-7873
Tel (630) 307-3000
Fax (630) 307-3030
<http://www.everpure.com>

In Europe:
N.V. EVERPURE (EUROPE) S.A.
INDUSTRIEPARK WOLFSTEE
TOEKOMSTLAAN 30
B-2200 HERENTALS
BELGIUM
TEL 32-14-283500
FAX 32-14-283505

In Japan:
EVERPURE JAPAN LLC
HASHIMOTO MN BLDG. 7F
3-25-1 HASHIMOTO SAGAMIHARA-SHI
KANAGAWA 229-1103
JAPAN
TEL 81-(0)42-775-3011
FAX 81-(0)42-775-3015

Everpure
1040 Muirfield Drive
Hanover Park, IL 60133
Phone: 630-307-3020 Fax: 630-307-3030



EV9797-50

Kleensteam CT

Total water treatment system for steam applications



Kleensteam CT System: EV9797-50

4CB5 Replacement Cartridge: EV9617-11

SS-10 Cartridge: EV9799-02

BENEFITS

A total system delivering high quality filtered water with cleaning and deliming capabilities

Sophisticated Hydroblend compound prevents limescale formation in high temperature steam applications

Fine filters incoming water to improve the performance, maximize energy efficiency and increase the life of steam equipment

Reduces chlorine-induced corrosion

System is simple to install, operate and maintain

Easy deliming with Everpure's ScaleKleen, which is fed directly into the boiler through the SR-X bowl without boiler disassembly or the use of dangerous acids

Longer lasting SS-10 cartridge is more effective in higher alkalinity/hardness/TDS/temperature installations.

Scalestick is NSF Certified under NSF/ANSI Standard 42 for material requirements only

INSTALLATION TIPS

Choose a mounting location suitable to support the full weight of the system when operating

Use 3/8" water line

Connect the system to the boiler water only! Do not connect to the condenser!

Install vertically with cartridges hanging down

Allow 2-1/2" clearance below the cartridge for easy cartridge replacement

Flush cartridges by running water through filter for five minutes at full flow

OPERATION TIPS

Change 4CB5 cartridge on a regular 6 month preventative maintenance program

Change SS-10 cartridge before Hydroblend™ compound is completely used up

Change cartridges when capacity is reached or when pressure falls below 10 psi

Service flow rate must not exceed 1.67 gpm

Always flush the filter cartridge at time of installation and cartridge change

APPLICATION/SIZING

For commercial steam applications

For use with countertop steamers

Kleensteam CT

SPECIFICATIONS

Overall Dimensions:
15.23"H x 13.72"W x 6.23"D

Inlet connection: 3/8"

Outlet connection: 3/8"

Service Flow Rate:
Maximum 1.67 gpm (6.3 Lpm)

Pressure Requirements:
10 psi -125 psi (0.7 – 8.6 bar), non-shock

Maximum water temperature at inlet:
80°F (27°C)

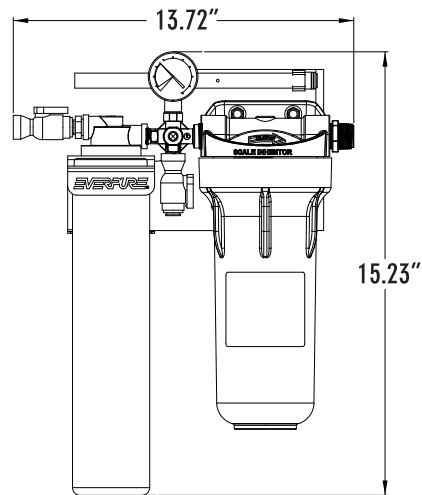
Alkalinity range:
2 to 12 grains per gallon

No electrical connection required

Shipping Weight: 15 lbs.

Operating Weight: 18 lbs.

The contaminants or other substances removed or reduced by this drinking water system are not necessarily in your water. Do not use with water that is microbiologically unsafe or of unknown quality without adequate disinfection before or after the system. Systems certified for cyst reduction may be used with disinfected water that may contain filterable cysts.



WARRANTY

Everpure water treatment systems (excluding replaceable elements) are covered by a limited warranty against defects in material and workmanship for a period of five years after date of purchase. Everpure replaceable elements (filter cartridges and water treatment cartridges) are covered by a limited warranty against defects in material and workmanship for a period of one year after date of purchase. See printed warranty for details. Everpure will provide a copy of the warranty upon request.

EVERPURE®

Worldwide Headquarters:
EVERPURE, LLC
1040 Muirfield Drive
Hanover Park, Illinois 60133
Toll Free (800) 323-7873
Tel (630) 307-3000
Fax (630) 307-3030
<http://www.everpure.com>

In Europe:
Pentair Water Belgium B.V./B.A.
Industriepark Wolfstee
Toekomstlaan 30
B- 2200 Herentals
BELGIUM
TEL: +32.(0).14.283.500
FAX: +32.(0).14.283.505

In Japan:
Hashimoto MN Bldg. 7F
3-25-1 Hashimoto Sagamihara-Shi
Kanagawa 229-1103
JAPAN
TEL: 81.(0)42.775.3011
FAX: 81.(0)42.775.3015



EV9612-06

MC Filter Cartridge

Delivers premium quality water for fountain and combination applications



MC Replacement Cartridge: EV9612-06

BENEFITS

- Reduces chlorine taste and odor and other offensive contaminants that can adversely affect the taste of beverages
- Improves the taste of fountain beverages and helps retain the drink's carbonation
- Precoat submicron technology reduces dirt and particles as small as 1/2 micron in size
- Reduces possible health contaminants such as asbestos fibers and Cryptosporidium and Giardia cysts
- Protects drink system seals, pump, tubing and small orifices from clogging, corrosion and abrasive wear
- Sanitary cartridge replacement is simple, quick and clean. Internal filter parts are never exposed to handling or contamination
- NSF Certified under NSF/ANSI Standards 42 and 53

INSTALLATION TIPS

- Install vertically with cartridge hanging down
- Allow 2-1/2" clearance below the cartridge for easy cartridge replacement
- Flush cartridge by running water through system for five minutes at full flow

OPERATION TIPS

- Change cartridges on a regular 6 month preventative maintenance program
- Change cartridges when capacity is reached or when pressure falls below 10 psi
- Always flush the filter cartridge at time of installation and cartridge change

APPLICATION/SIZING

- For fountain beverage applications
- For combination system applications
- Rated Capacity: 9,000 gallons (34,068L)

MC Filter Cartridge

SPECIFICATIONS

Overall Dimensions:
20.75"H x 3.25"Diameter

Service Flow Rate:
Maximum 1.67 gpm (6.3 Lpm)

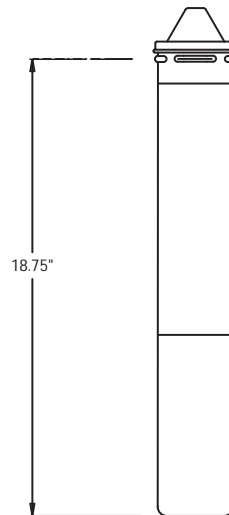
Rated Capacity: 9,000 gallons

Pressure Requirements:
10 - 125 psi (0.7 - 8.6 bar), non-shock

Temperature: 35 - 100°F (2 - 38°C)

No electrical connection required

The contaminants or other substances removed or reduced by this drinking water system are not necessarily in your water. Do not use with water that is microbiologically unsafe or of unknown quality without adequate disinfection before or after the system. Systems certified for cyst reduction may be used with disinfected water that may contain filterable cysts.



WARRANTY

Everpure water treatment systems (excluding replaceable elements) are covered by a limited warranty against defects in material and workmanship for a period of five years after date of purchase. Everpure replaceable elements (filter cartridges and water treatment cartridges) are covered by a limited warranty against defects in material and workmanship for a period of one year after date of purchase. See printed warranty for details. Everpure will provide a copy of the warranty upon request.



System Tested and Certified by NSF International against NSF/ANSI Standard 42 and 53 for the reduction of:

Standard No. 42: Aesthetic Effects
Chemical Unit
Taste and Odor Reduction
Chlorine Reduction
Mechanical Filtration Unit
Particulate Reduction, Class I:
99.9+% reduction of particles
one-half micron and larger in size
Standard No. 53: Health Effects
Mechanical Filtration Unit
Turbidity Reduction
Cyst Reduction
Asbestos Reduction



EVERPURE, LLC
1040 Muirfield Drive
Hanover Park, Illinois 60133
Toll Free (800) 323-7873
Tel (630) 307-3000
Fax (630) 307-3030
<http://www.everpure.com>

In Europe:
N.V. EVERPURE (EUROPE) S.A.
INDUSTRIEPARK WOLFSTEE
TOEKOMSTLAAN 30
B-2200 HERENTALS
BELGIUM
TEL 32-14-283500
FAX 32-14-283505

In Japan:
EVERPURE JAPAN LLC
HASHIMOTO MN BLDG. 7F
3-25-1 HASHIMOTO SAGAMIHARA-SHI
KANAGAWA 229-1103
JAPAN
TEL 81-(0)42-775-3011
FAX 81-(0)42-775-3015

Everpure, LLC
1040 Muirfield Drive
Hanover Park, IL 60133
Ph: 630-307-3000 Fax: 630-307-3030



EV9613-01

MH Filter Cartridge

Delivers premium quality water for coffee applications



MH Replacement Cartridge: EV9613-01

BENEFITS

Provides clear, fresh, premium quality ingredient water for consistently great tasting coffee and beverages

Everpure's unique filter blend using activated carbon reduces chlorine taste and odor and other offensive contaminants

Saves energy by reducing scale build-up. Self-contained scale inhibitor feed dramatically prevents limescale from forming in brewing equipment

Engineered to always feed the correct amount of scale inhibitor into each volume of water

Precoat submicron technology reduces dirt and particles as small as 1/2 micron in size

Reduces health contaminants such as asbestos fibers and Cryptosporidium and Giardia cysts

Sanitary cartridge replacement is simple, quick and clean. Internal filter parts are never exposed to handling or contamination

NSF Certified under NSF/ANSI Standards 42 and 53

INSTALLATION TIPS

Install vertically with cartridge hanging down
 Allow 2-1/2" clearance below the cartridge for easy cartridge replacement
 Flush cartridge by running water through filter for three minutes at full flow

OPERATION TIPS

Change cartridges on a regular 6 month preventative maintenance program
 Change cartridges when capacity is reached or when pressure falls below 10 psi
 Always flush the filter cartridge at time of installation and cartridge change

APPLICATION/SIZING

For coffee applications
 High flow, higher volume coffee urns
 Rated Capacity: 9,000 gallons (34,068L) or 18,000 pots

MH Filter Cartridge

SPECIFICATIONS

Overall Dimensions:
20.75"H x 3.25"Diameter

Service Flow Rate:
Maximum 1.67 gpm (6.3 Lpm)

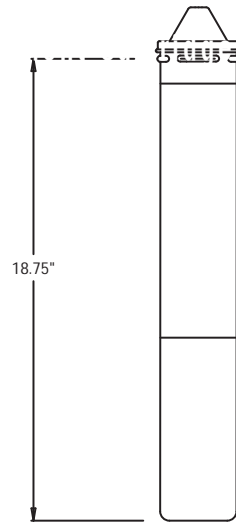
Rated Capacity: 9,000 gallons

Pressure Requirements:
10 - 125 psi (0.7 - 8.6 bar), non-shock

Temperature: 35 - 100°F (2 - 38°C)

No electrical connection required

The contaminants or other substances removed or reduced by this drinking water system are not necessarily in your water. Do not use with water that is microbiologically unsafe or of unknown quality without adequate disinfection before or after the system. Systems certified for cyst reduction may be used with disinfected water that may contain filterable cysts.



WARRANTY

Everpure water treatment systems (excluding replaceable elements) are covered by a limited warranty against defects in material and workmanship for a period of five years after date of purchase. Everpure replaceable elements (filter cartridges and water treatment cartridges) are covered by a limited warranty against defects in material and workmanship for a period of one year after date of purchase. See printed warranty for details. Everpure will provide a copy of the warranty upon request.



System Tested and Certified by NSF International against NSF/ANSI Standard 42 and 53 for the reduction of:

Standard No. 42: Aesthetic Effects
Chemical Unit
Taste and Odor Reduction
Chlorine Reduction
Mechanical Filtration Unit
Particulate Reduction, Class I:
99.9+% reduction of particles
one-half micron and larger in size
Standard No. 53: Health Effects
Mechanical Filtration Unit
Turbidity Reduction
Cyst Reduction
Asbestos Reduction



EVERPURE, LLC
1040 Muirfield Drive
Hanover Park, Illinois 60133
Toll Free (800) 323-7873
Tel (630) 307-3000
Fax (630) 307-3030
<http://www.everpure.com>

In Europe:
N.V. EVERPURE (EUROPE) S.A.
INDUSTRIEPARK WOLFSTEE
TOEKOMSTLAAN 30
B-2200 HERENTALS
BELGIUM
TEL 32-14-283500
FAX 32-14-283505

In Japan:
EVERPURE JAPAN LLC
HASHIMOTO MN BLDG. 7F
3-25-1 HASHIMOTO SAGAMIHARA-SHI
KANAGAWA 229-1103
JAPAN
TEL 81-(0)42-775-3011
FAX 81-(0)42-775-3015

Everpure, LLC
1040 Muirfield Drive
Hanover Park, IL 60133
Ph: 630-307-3000 Fax: 630-307-3030



How the Everpure Pre-Coat filter works

Delivers premium quality water for foodservice, vending and office applications

1. Water enters the top of the Everpure filter cartridge, flows down through the inlet tube and into the filter chamber



2. Through our exclusive precoat process, Micro-Pure coats the filter membrane throughout the life of the cartridge, water flows evenly and freely even with changes of pressure

3. Incoming pressure forces the water through the layer of Micro-Pure and through the filter membrane. The openings in the Micro-Pure layer are so small that any particle 1/2 micron or larger is removed

4. Filtered water channels up through the rigid structure of the filter membrane out of the system

BENEFITS

Reduces chlorine taste and odour and other offensive contaminants

Improves the taste of beverages, like tea and coffee and helps retain the soft drink's carbonation

Precoat submicron technology reduces dirt and particles as small as 1/2 micron in size

Reduces possible health contaminants such as asbestos fibers and Cryptosporidium and Giardia cysts

Lime scale inhibition is provided in selective number of cartridges

Protects drink system seals, pump, tubing and small orifices from clogging, corrosion and abrasive wear

Manifold features water shut off, flushing valve and outlet pressure gauge

Sanitary cartridge replacement is simple, quick and clean. Internal filter parts are never exposed to handling or contamination

NSF Certified under NSF/ANSI Standards 42 and 53

INSTALLATION TIPS

Choose a mounting location suitable to support the full weight of the system when operating

Install vertically with cartridges hanging down

Allow 7 cm clearance below the cartridge for easy cartridge replacement

Flush cartridges by running water through system for 5 minutes at full flow

OPERATION TIPS

Service flow rate must not exceed the indicated flow rate

Always flush the filter cartridge at time of installation and cartridge change

Replace cartridge when flow becomes inconveniently slow or before rated capacity is reached

It is recommended to replace cartridge at least once a year.

APPLICATION / SIZING

For foodservice applications

- post mix fountains
- ice machines
- vending machines
- coffee & espresso machines
- steam ovens
- water fountains

Poly Glass™ Vessels

Product Features

- For residential and light commercial water softener/filtration applications
- Slim diameter with capacities from 2 to 49 gallons
- Unmatched for strength and chemical resistance
- 10-year warranty for 6" - 13" vessels
- 5-year warranty for 14" - 16" vessels

Material of Construction

- Inner shell of polyethylene
- Threaded inlet in various sizes

Operating Parameters

- Maximum operating pressure: 150 psi
- Maximum operating temperature: 120°F

Pentair Design Parameters

- Safety factor: 4:1
- Minimum burst at 600 psi
- Tested to 250,000 cycles without leakage

NSF Design Parameters

- Safety factor: 4:1
- Minimum burst at 600 psi
- Tested to 100,000 cycles without leakage



Specifications

	Part No.	Description	Size (Inches)	System Connection	Height w/ Base Inches / mm	Height w/o Base Inches / mm	Capacity Gallons / Liters	Cubic Feet
6" Dia.	30109	0613 PG 2.5"T	06 x 13	2.5" Threaded	13.2 / 335	12.6 / 320	1.1 / 4.2	0.15
	30127	0618 PG 2.5"T	06 x 18	2.5" Threaded	18.6 / 472	18.0 / 457	1.8 / 6.8	0.24
	30151	0635 PG 2.5"T	06 x 35	2.5" Threaded	35.8 / 909	35.2 / 894	3.8 / 14.4	0.51
7" Dia.	30190	0735 PG 2.5"T	07 x 35	2.5" Threaded	35.6 / 904	35.3 / 897	5.2 / 19.7	0.7
	30213	0744 PG 2.5"T	07 x 44	2.5" Threaded	43.7 / 1110	43.4 / 1102	6.7 / 25.4	0.9
8" Dia.	31835	0818 PG 2.5"T	08 x 18	2.5" Threaded	18.8 / 478	18.5 / 470	3.28 / 12.0	0.44
	31836	0830 PG 2.5"T	08 x 30	2.5" Threaded	30.43 / 772	30.13 / 765	5.4 / 20.4	0.72
	30264	0835 PG 2.5"T	08 x 35	2.5" Threaded	35.6 / 904	35.3 / 897	6.6 / 25.0	0.88
	30286	0840 PG 2.5"T	08 x 40	2.5" Threaded	40.2 / 1021	39.9 / 1013	7.8 / 29.5	1.04
	30305	0844 PG 2.5"T	08 x 44	2.5" Threaded	44.4 / 1128	44.1 / 1120	8.7 / 32.9	1.16
9" Dia.	30317	0918 PG 2.5"T	09 x 18	2.5" Threaded	18.6 / 472	18.0 / 457	3.9 / 14.8	0.52
	30347	0935 PG 2.5"T	09 x 35	2.5" Threaded	35.6 / 904	35.3 / 897	8.3 / 31.4	1.11
	30360	0940 PG 2.5"T	09 x 40	2.5" Threaded	40.2 / 1021	39.9 / 1013	9.5 / 31.4	1.27
	30367	0942 PG 2.5"T	09 x 42	2.5" Threaded	42.4 / 1077	42.1 / 1069	10.9 / 41.2	1.46
	30383	0948 PG 2.5"T	09 x 48	2.5" Threaded	48.2 / 1224	47.9 / 1217	11.8 / 44.7	1.58
10" Dia.	30460	1035 PG 2.5"T	10 x 35	2.5" Threaded	35.6 / 904	35.3 / 897	10.2 / 38.6	1.36
	32266	1035 PG 2.5"T 1.25"TDH LOC A	10 x 35	2.5" Threaded 1.25 TDH	35.6 / 904	35.3 / 897	10.2 / 38.6	1.36
	32346	1035 PG 2.5"T 1.25"TDH LOC B	10 x 35	2.5" Threaded 1.25 TDH	35.6 / 904	35.3 / 897	10.2 / 38.6	1.36
	33018	1035 PG 2.5"T 1.25"TDH LOC C	10 x 35	2.5" Threaded 1.25 TDH	35.6 / 904	35.3 / 897	10.2 / 38.6	1.36
	30491	1040 PG 2.5"T	10 x 40	2.5" Threaded	40.3 / 1024	40.1 / 1018	11.5 / 43.5	1.54
	32150	1040 PG 2.5"T 1.25"TDH LOC A	10 x 40	2.5" Threaded 1.25 TDH	40.3 / 1024	40.1 / 1018	11.5 / 43.5	1.54
	32347	1040 PG 2.5"T 1.25"TDH LOC B	10 x 40	2.5" Threaded 1.25 TDH	40.3 / 1024	40.1 / 1018	11.5 / 43.5	1.54
	32992	1040 PG 2.5"T 1.25"TDH LOC C	10 x 40	2.5" Threaded 1.25 TDH	40.3 / 1024	40.1 / 1018	11.5 / 43.5	1.54
	30523	1044 PG 2.5"T	10 x 44	2.5" Threaded	44.6 / 1133	44.4 / 1128	13.1 / 49.6	1.75
	32993	1044 PG 2.5"T 1.25"TDH LOC A	10 x 44	2.5" Threaded 1.25 TDH	44.6 / 1133	44.4 / 1128	13.1 / 49.6	1.75
	32994	1044 PG 2.5"T 1.25"TDH LOC B	10 x 44	2.5" Threaded 1.25 TDH	44.6 / 1133	44.4 / 1128	13.1 / 49.6	1.75
	32995	1044 PG 2.5"T 1.25"TDH LOC C	10 x 44	2.5" Threaded 1.25 TDH	44.6 / 1133	44.4 / 1128	13.1 / 49.6	1.75
	30546	1047 PG 2.5"T	10 x 47	2.5" Threaded	47.4 / 1204	46.9 / 1191	15.1 / 57.0	2.02
	30579	1054 PG 2.5"T	10 x 54	2.5" Threaded	54.8 / 1392	54.6 / 1387	16.4 / 62.0	2.19
	32065	1054 PG 2.5"T 1.25"TDH LOC A	10 x 54	2.5" Threaded 1.25 TDH	54.8 / 1392	54.6 / 1387	16.4 / 62.0	2.19
32345	1054 PG 2.5"T 1.25"TDH LOC B	10 x 54	2.5" Threaded 1.25 TDH	54.8 / 1392	54.6 / 1387	16.4 / 62.0	2.19	
32997	1054 PG 2.5"T 1.25"TDH LOC C	10 x 54	2.5" Threaded 1.25 TDH	54.8 / 1392	54.6 / 1387	16.4 / 62.0	2.19	
12" Dia.	30615	1242 PG 2.5"T	12 x 42	2.5" Threaded	42.8 / 1087	42.2 / 1072	19.1 / 72.0	2.55
	30617	1242 PG 4.5"T (BTRS)	12 x 42	4.5" Threaded (BTRS)	42.8 / 1087	42.2 / 1072	19.1 / 72.0	2.55
	30646	1248 PG 2.5"T	12 x 48	2.5" Threaded	48.8 / 1240	48.4 / 1229	20.6 / 78.0	2.75
	30666	1252 PG 2.5"T	12 x 52	2.5" Threaded	52.9 / 1344	52.4 / 1331	22.2 / 84.0	2.97
	30669	1252 PG 4"T	12 x 52	4.0" Threaded	52.9 / 1344	52.4 / 1331	22.2 / 84.0	2.97
	32127	1252 PG 4.5"T (BTRS) New	12 x 52	4.5" Threaded (BTRS)	52.9 / 1344	52.4 / 1331	22.2 / 84.0	2.97
13" Dia.	30721	1354 PG 2.5"T	13 x 54	2.5" Threaded	54.6 / 1387	53.9 / 1369	27.5 / 104.0	3.68
	30724	1354 PG 4"T	13 x 54	4.0" Threaded	54.6 / 1387	53.9 / 1369	27.5 / 104.0	3.68
	32890	1354 PG 2.5"T 1.25"TDH LOC A	13 x 54	2.5" Threaded 1.25 TDH	54.6 / 1387	53.9 / 1369	27.5 / 104.0	3.68
	32891	1354 PG 2.5"T 1.25"TDH LOC B	13 x 54	2.5" Threaded 1.25 TDH	54.6 / 1387	53.9 / 1369	27.5 / 104.0	3.68
32892	1354 PG 2.5"T 1.25"TDH LOC C	13 x 54	2.5" Threaded 1.25 TDH	54.6 / 1387	53.9 / 1369	27.5 / 104.0	3.68	
14" Dia.	30745	1447 PG 4"T	14 x 47	4.0" Threaded	46.5 / 1181	46.0 / 1168	27.5 / 104.0	3.68
	31389	1447 PG 2.5"T	14 x 47	2.5" Threaded	46.5 / 1181	46.0 / 1168	27.5 / 104.0	3.68
	32006	1447 PG 4.5"T (BTRS) New	14 x 47	4.5" Threaded (BTRS)	46.5 / 1181	46.0 / 1168	27.5 / 104.0	3.68
	30783	1465 PG 2.5"T	14 x 65	2.5" Threaded	64.6 / 1641	64.3 / 1633	40.6 / 154.0	5.43
30785	1465PG 4"T	14 x 65	4.0" Threaded	64.6 / 1641	64.3 / 1633	40.6 / 154.0	5.43	
16" Dia.	30912	1665 PG 4"T	16 x 65	4.0" Threaded	64.6 / 1641	64.3 / 1633	49.0 / 185.0	6.55
	31627	1665 PG 2.5"T	16 x 65	2.5" Threaded	64.6 / 1641	64.3 / 1633	49.0 / 185.0	6.55

Color Options: AL - Almond  BL - Blue  BK - Black  GR - Gray  NA - Natural 



Features

- Fully adjustable, 5-cycle control is efficient and reliable, delivering controlled upflow backwash, downflow brining and downflow service
- Versatile top or side mount is suitable for commercial or industrial applications
- Backwash capacity accommodates tanks up to 63" diameter
- Solid, lead-free brass construction for superior strength and durability
- Protective NEMA 3R equivalent enclosure is rain tight, and UV stable
- Flexible 7 or 12 day time clock or meter initiated regeneration
- Ideal for most filter applications up to 42"

Options

- Filter or softener control valve
- Meter delayed or immediate initiated regeneration
- Service valve operator
- Side mount
- Electronic timer, 3200NXT, 3214NXT, or XT
- Choice of 7 or 12 day timer
- Hot water up to 180°F for any filter or 1600 brine system or metered control valve
- Hot water up to 150°F for any 1700 brine system or metered control valve
- No hard water bypass
- Upflow regeneration
- Auxiliary switch

Valve Specifications

Valve material	Lead-free brass*
Inlet/Outlet	2" NPTF
Cycles	5

Flow Rates (50 psi Inlet) - Valve Alone

Flow rate (50 psi Inlet)	Top mount	Side mount
Continuous (15 psi drop)	95 GPM	100 GPM
Peak (25 psi drop)	124 GPM	129 GPM
Cv (flow at 1 psi drop)	24.8	25.9
Max. backwash (25 psi drop)	105 GPM	109 GPM

Regeneration

Downflow/Upflow	Both
Adjustable cycles	Yes
Time available	Electromechanical: 164 minutes 3200NXT: 240 minutes per cycle 3214NXT: 240 minutes per cycle XT: Up to 240 minutes per cycle

Meter Information

Meter accuracy	3 - 150 GPM +/- 5%
Meter capacity range (gal.)	Standard: 1,250 - 21,250 Extended: 6,250 - 106,250 3200NXT: 2,900,000 3214NXT: 9,900,000 XT: 1,000 - 9,900,000

Dimensions

Distributor pilot	2" pipe I.D.
Drain line	2" NPTF
Injector brine system	1"
Brine line	1" NPTM
Mounting base	Top mount: 4" - 8 UN
Height from top of tank	10"

Additional Information

Electrical rating	24 v, 110 v - 50 Hz, 60 Hz
Estimated shipping weight	Time clock: 39 lbs. Metered value: 46 lbs.
Pressure	Hydrostatic: 300 psi Working: 20 - 125 psi
Temperature	34° - 110° F

* As defined in the U.S. EPA Safe Drinking Water Act; the product also meets California Proposition 65 Standards





◀ Back (without cover)

Features

- Simple mechanical design is easy to use
- Two valve body designs: one for downflow regeneration and one for upflow (covers every valve in the 5600 family - quick access to all internal components)
- Injector/drain modules containing the brine valve, flow controls, and injector are removable from the valve's exterior
- Ruggedly-built timer is designed with heavy-duty 3/8" wide plastic gears
- 5600 controls are user-friendly
- Non-corrosive, UV-resistant, fiber-reinforced polymer valve body
- Economical - small annual power consumption; keeps the time and activates the piston/valve mechanics with a single motor
- Designed with double backwash

Options

- Bypass valve (Fiber-reinforced polymer or stainless steel)
- Low water use piston (uses as little as 29 gal./regeneration)
- Choice of 7 or 12 day clock timers
- Filter or softener control valve
- Upflow or downflow regeneration control valve

Valve Specifications

Valve material	Fiber-reinforced polymer
Inlet/Outlet	3/4", 1", 1-1/4"
Cycles	7

Flow Rates (50 psi Inlet) - Valve Alone

Continuous (15 psi drop)	20 GPM
Peak (25 psi drop)	26 GPM
Cv (flow at 1 psi drop)	5
Max. backwash (25 psi drop)	7 GPM

Regeneration

Downflow/Upflow	Both
Adjustable cycles	Brine fill only
Time available	180 minutes per cycle

Meter Information

Meter accuracy	.25 - 15 GPM +/- 5%
Meter capacity range (gal.)	Standard: 125 - 2,125 Extended: 625 - 10,625

Dimensions

Distributor pilot	13/16" or 1.05" O.D.
Drain line	1/2" NPTF
Injector brine system	1600
Brine line	3/8"
Mounting base	2-1/2" - 8 NPSM
Height from top of tank	7"

Typical Applications

Water softener	6" - 12" diameter
Filters	8" - 10" diameter

Electrical rating

24 v, 110 v, 220 v - 50 Hz, 60 Hz *

Additional Information

Estimated shipping weight	Time clock: 5 lbs Metered valve: 6 lbs.
Pressure	Hydrostatic: 300 psi Working: 20 - 125 psi
Temperature	34° - 110° F

Approvals

NSF Standard 44 Certified
UL registered components

* 24 VAC Pentair Transformers:
115 VAC +/- 20% Input, 24 VAC Output
230 VAC +/- 20% Input, 24 VAC Output



Composite Vessels

Product Features

- For commercial and industrial water treatment and storage
- 100% composite fiberglass construction
- Outstanding performance and durability in harsh chemical environments
- Absolutely will not - and cannot - rust
- Requires little or no maintenance
- Capacities up to 2500 gallons
- Factory-backed five-year warranty

Materials of Construction

- Polyethylene inner shell (PVDF available)

Operating Parameters

- Maximum operating pressure: 150 psi
- Maximum operating temperature: 150°F (flanged) 120°F (threaded)

Pentair Design Parameters

- Safety factor: 4:1
- Minimum burst at 600 psi
- Tested to 250,000 cycles without leakage

NSF Design Parameters

- Safety factor: 4:1
- Minimum burst at 600 psi
- Tested to 100,000 cycles without leakage

ASME Design Parameters

Top/bottom flange:

- Safety factor: 5:1
- Minimum burst at 750 psi
- Tested to 33,000 cycles without leakage

Side flange:

- Safety factor: 6:1
- Minimum burst at 900 psi
- Tested to 100,000 cycles without leakage



Specifications

	Part No.	Description	Height w/ base Inches / mm	Height w/o base Inches / mm	Capacity Gallons / Liters	Cubic Feet	Top Open	Bottom Open	Top Side	Bottom Side	Base	Ship Weight
18" Dia.	30948	18 x 65	67.1 / 1704	66.5 / 1689	62.4 / 236	8.3	4"- 8" UN	N/A	N/A	N/A	SMC	67.7
	31343	18 x 65	79.8 / 2027	63.3 / 1608	62.4 / 236	8.3	4"- 8" UN	4"- 8" UN	N/A	N/A	tripod	79.7
	31693	18 x 65	84.4 / 2144	70.0 / 1778	62.4 / 236	8.3	6" FLG	6" FLG	N/A	N/A	tripod	79.7
21" Dia.	30949	21 x 36	41.7 / 1059	38.2 / 970	45.3 / 171	6.1	2.5" NPSM	N/A	N/A	N/A	SMC	46
	30950	21 x 36	41.7 / 1059	38.2 / 970	45.3 / 171	6.1	4"- 8" UN	N/A	N/A	N/A	SMC	46
	31573	21 x 36	54.5 / 1386	38.2 / 970	45.3 / 171	6.1	4"- 8" UN	4"- 8" UN	N/A	N/A	tripod	46
	30953	21 x 62	66.9 / 1699	62.6 / 1590	82.4 / 312	11.0	4"- 8" UN	N/A	N/A	N/A	SMC	90
	30954	21 x 62	79.0 / 2006	62.6 / 1590	82.4 / 312	11.0	4"- 8" UN	4"- 8" UN	N/A	N/A	*tripod	90
24" Dia.	31043	24 x 38	42.0 / 1059	38.5 / 978	61.0 / 231	8.2	4"- 8" UN	N/A	N/A	N/A	SMC	46
	31053	24 x 50	55.6 / 1412	51.5 / 1308	83.5 / 316	11.2	4"- 8" UN	N/A	N/A	N/A	SMC	83.5
	31611	24 x 50	68.4 / 1738	52.9 / 1344	83.5 / 316	11.2	4"- 8" UN	4"- 8" UN	N/A	N/A	*tripod	83.5
	32049	24 x 65	64 / 1626	60.5 / 1537	100 / 378	13.4	4"- 8" UN	N/A	N/A	N/A	SMC	100
	32129	24 x 65	66.5 / 1689	62.6 / 1590	100 / 378	13.4	6" FLG	N/A	N/A	N/A	SMC	100
	32139	24 x 65	79.0 / 2008	65.0 / 1651	100 / 378	13.4	6" FLG	6" FLG	N/A	N/A	tripod	100
	32481	24 x 65	75.7 / 1924	60.0 / 1524	100 / 378	13.4	4"- 8" UN	4"- 8" UN	N/A	N/A	*tripod	100
	31153	24 x 72	74.1 / 1882	70.6 / 1793	119 / 450	15.9	4"- 8" UN	N/A	N/A	N/A	SMC	139
	31154	24 x 72	84.5 / 2147	69.0 / 1753	119 / 450	15.9	4"- 8" UN	4"- 8" UN	N/A	N/A	*tripod	139
	31155	24 x 72	76.8 / 1951	73.3 / 1862	119 / 450	15.9	6" FLG	N/A	N/A	N/A	SMC	149
	31157	24 x 72	87.9 / 2232	74.5 / 1892	119 / 450	15.9	6" FLG	6" FLG	N/A	N/A	tripod	149
30" Dia.	31161	30 x 72	85.9 / 2182	70.2 / 1783	187 / 708	25.0	4"- 8" UN	4"- 8" UN	N/A	N/A	*tripod	234
	31162	30 x 72	80.8 / 2052	73.0 / 1854	187 / 708	25.0	6" FLG	N/A	N/A	N/A	SMC	240
	31163	30 x 72	88.3 / 2242	74.7 / 1897	187 / 708	25.0	6" FLG	6" FLG	N/A	N/A	tripod	240
36" Dia.	31417	36 x 57	70.5 / 1791	60.0 / 1524	205 / 776	27.4	6" FLG	N/A	N/A	N/A	SMC	160
	31418	36 x 57	77.0 / 1956	63.0 / 1600	205 / 776	27.4	6" FLG	6" FLG	N/A	N/A	tripod	160
	31712	36 x 72	89.0 / 2261	75.0 / 1905	264 / 999	35.3	6" FLG	6" FLG	4" FLG	4" FLG	tripod	292
	31214	36 x 72	83.0 / 2108	73.5 / 1867	264 / 999	35.3	6" FLG	N/A	N/A	N/A	SMC	292
	31217	36 x 72	89.0 / 2261	75.0 / 1905	264 / 999	35.3	6" FLG	6" FLG	N/A	N/A	tripod	292
	31523	36 x 72	86.2 / 2190	70.5 / 1791	264 / 999	35.3	4"- 8" UN	4"- 8" UN	N/A	N/A	*tripod	292
42" Dia.	31272	42 x 72	94.5 / 2401	71.0 / 1803	345 / 1306	46.1	6" FLG	N/A	N/A	N/A	tripod	678
	31272	42 x 72	72.0 / 1828	71.0 / 1803	345 / 1306	46.1	6" FLG	N/A	N/A	N/A	short SMC	xxx
	31276	42 x 72	94.6 / 2404	73.0 / 1854	345 / 1306	46.1	6" FLG	6" FLG	N/A	N/A	tripod	678
48" Dia.	31281	48 x 72	91.8 / 2332	76.0 / 1930	463 / 1753	61.9	6" FLG	N/A	N/A	N/A	tripod	780
	31283	48 x 72	96.6 / 2454	80.8 / 2052	463 / 1753	61.9	6" FLG	6" FLG	4" FLG	4" FLG	tripod	780
	31285	48 x 72	92.8 / 2357	77.0 / 1955	463 / 1753	61.9	6" FLG	6" FLG	N/A	N/A	tripod	780
	31432	48 x 72	97.5 / 2477	81.7 / 2075	463 / 1753	61.9	16" MWY	6" FLG	4" FLG	4" FLG	tripod	780
	31647	48 x 72	93.8 / 2383	78.0 / 1981	463 / 1753	61.9	16" MWY	6" FLG	N/A	N/A	tripod	780
63" Dia.	31290	63 x 67	80.3 / 2344	67.8 / 1722	600 / 2271	80.2	16" MWY	6" FLG	N/A	N/A	tripod	900
	31390	63 x 67	79.5 / 2324	67.0 / 1702	600 / 2271	80.2	6" FLG	6" FLG	N/A	N/A	tripod	900
	32008	63 x 67	80.3 / 2344	67.8 / 1722	600 / 2271	80.2	16" MWY	10" FLG	N/A	N/A	tripod	900
	31292	63 x 86	97.0 / 2769	84.5 / 2146	850 / 3218	114	16" MWY	6" FLG	4" FLG	4" FLG	tripod	1425
	31326	63 x 86	96.6 / 2758	84.1 / 2136	850 / 3218	114	6" FLG	6" FLG	N/A	N/A	tripod	1425
	31327	63 x 86	97.0 / 2769	84.5 / 2146	850 / 3218	114	16" MWY	6" FLG	N/A	N/A	tripod	1200
	32253	63 x 86	96.6 / 2758	84.1 / 2136	850 / 3218	114	10" FLG	6" FLG	N/A	N/A	tripod	1200
	32356	63 x 86	97.0 / 2769	84.5 / 2146	850 / 3218	114	16" MWY	10" FLG	N/A	N/A	tripod	1425
	32678	63 x 86	96.6 / 2758	84.1 / 2136	850 / 3218	114	6" FLG	6" FLG	4" FLG	4" FLG	tripod	1425
	31325	63 x 116	128.5 / 3264	116.0 / 2946	1250 / 4732	167	16" MWY	6" FLG	4" FLG	4" FLG	tripod	1775
	32500	63 x 116	128.5 / 3264	116.0 / 2946	1250 / 4732	167	16" MWY	6" FLG	N/A	N/A	tripod	1425
	31456	63 x 144	158.5 / 4026	146.0 / 3708	1600 / 6057	214	16" MWY	6" FLG	N/A	N/A	tripod	2025
	31607	63 x 144	158.5 / 4026	146.0 / 3708	1600 / 6057	214	16" MWY	6" FLG	4" FLG	4" FLG	tripod	2025
	31664	63 x 144	158.5 / 4026	146.0 / 3708	1600 / 6057	214	16" MWY	10" FLG	N/A	N/A	tripod	2025

Color Options: AL - Almond  BL - Blue  BK - Black  GR - Gray  NA - Natural 

*Measurements are subject to change without notice and are for reference only.

NOTE: Flexible connections must be installed between hard piping and tank openings. Failure to install flex connection properly with the vessel will void the warranty.

Composite Vessels – Specifications



Fleck Valve	Tank Dia. Inches / mm	Adder Ht. (X) Inches / mm
2750	18 / 457	6.5 / 165
2850	21 / 533	6.5 / 165
2900	24, 30 / 610, 762	12 / 305
3150	42 / 1067	10 / 254
3900	48-63 / 1219-1600	15 / 381

Installation Tips:

- Bolt base to floor
- Calculate height for valve and base combined (see photo)

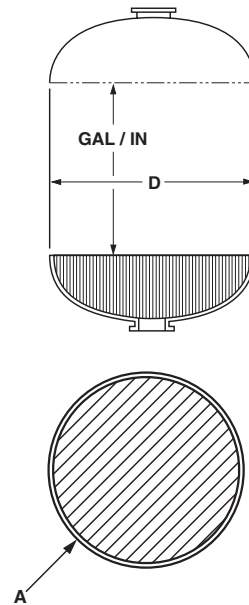
Color Options: AL - Almond  BL - Blue  BK - Black  GR - Gray  NA - Natural 

*Measurements are subject to change without notice and are for reference only.

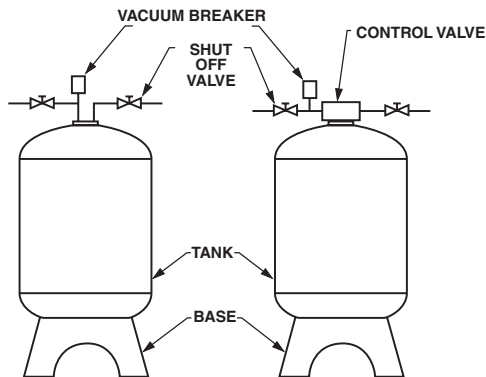
Dome Volume (gallons) and Straight Wall Gallon per Inch

Nominal Diameter			
D (inches)	Gallons* (One Dome)	Gallon / Inch (Approx.)	A (Sq. Feet)
12	1.0	0.5	0.7
13	1.4	0.5	0.9
14	1.7	0.6	1.1
16	2.7	0.8	1.3
18	3.7	1.0	1.8
21	6.2	1.4	2.4
24	9.3	1.9	3.0
30	18	2.9	4.6
36	33	4.2	6.7
42	52	5.7	9.0
48	74	7.5	12.0
63	168	13.0	20.0

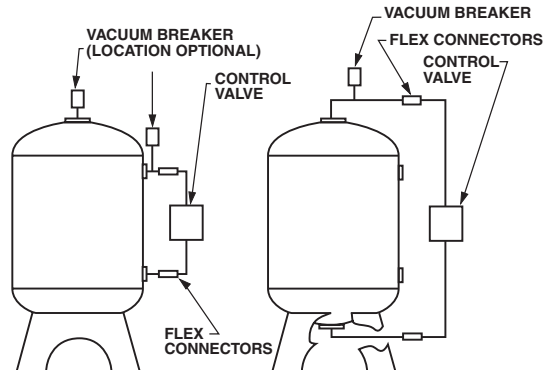
*Cubic Ft. = 0.1337 x Gallons



Vacuum Breaker Installation



Flex Connectors Installation

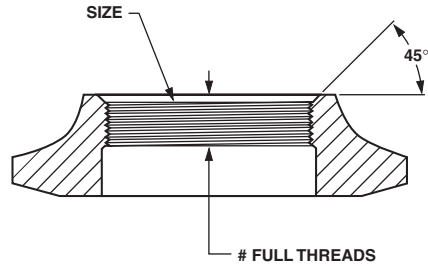


NOTE: Flexible connectors must be installed between hard piping and tank openings. These pressure vessels are rated for an internal negative pressure of 5y HG (17 Pa) vacuum below atmospheric. If negative pressure could ever exceed 5y Hg (17 Pa), an adequate vacuum breaker must also be properly installed. Failure to install flex connection properly, or improper installation of a vacuum breaker when required, may void the warranty.

Composite Vessels – Specifications

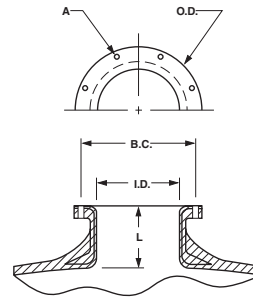
Top and Bottom Opening Threads

Size	Composite/ Polyglass	Number of Full Threads	Composite
2.5"- 8" NPSM	6	3 min	6
4"- 8" UN	7	3 min	7
4.5"- 8" Buttress	7	3 min	7



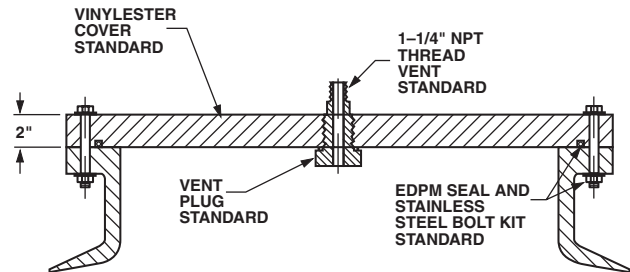
Top and Bottom Opening Flanges/Manway

Size	L	I.D.	B.C.	O.D.	A Bolt Dia.	Number of Holes	Weight (lbs.)
6" SNA	3.6"	5.9"	8.5"	9.4"	0.31"	12	5.8
10" ANSI	3.7"	10.0"	14.3"	16.0"	0.88"	12	17.8
16" Manway SNA	4.3"	16.0"	20.4"	21.3"	0.50"	24	34.0



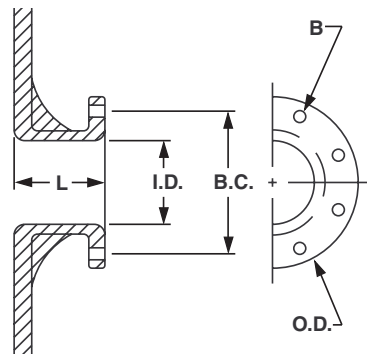
Manway Cover

Material	Pressure Rating	Tapping
CPVC	100 psi	As requested
VE	150 psi	As shown only



Side Flange

Size	L	I.D.	B.C.	O.D.	B Bolt Dia.	Number of Holes	Weight (lbs.)
4" ANSI	4.1"	4.0"	7.5"	9.0"	0.63"	8	6.4





BRACKISH WATER REVERSE OSMOSIS UNITS

TBW3L SERIES

Production: 50m³/day up to 1248m³/day

For water with TDS up to 3500ppm



MAIN EQUIPMENT

- Automatic inlet valve (Diaphragm or butterfly)
- High pressure pump *
- Membranes
- Vessels
- Product flow meter * *
- Reject flow meter with minimum reject regulator* * *
- Recirculation flow meter (where recirculation applies)]
- Reject-recycling regulating valves as well as pump outlet regulating valve
- Membrane In/Out pressure gauge
- Low pressure presostat at the inlet of the high pressure pump
- Electronic control panel with incoorporated conductivity meter
- Electric power switchboard

** The pump power depends on the chemical analysis and the temperature of the feed water*

** * The exact production depends on the feed waters quality and temperature*

** * * The exact rejection flow rate depends on feed water quality and the selected pre-treatment.*

Model	Connections			Dimensions		
	Inlet (PVC)	Production (PVC)	Drain (PVC)	Length (cm)	Width (cm)	Height (cm)
TBW32L	Union Ø50	Union Ø 40	Union Ø 40	300	70	180
TBW33L	Union Ø50	Union Ø 40	Union Ø 40	400	70	180
TBW34L	Union Ø50	Union Ø 40	Union Ø 40	300	70	180
TBW36L	Union Ø50	Union Ø 50	Union Ø 40	400	70	180
TBW38L	Union Ø50	Union Ø 50	Union Ø 40	550	70	180
TBW39L	Union Ø50	Union Ø 50	Union Ø 40	400	70	180
TBW310L	Union Ø50	Union Ø 63	Union Ø 40	650	70	180
TBW312L	Union Ø50	Union Ø 50	Union Ø 40	550	70	180
Model	Maximum production		Usual Rejection			
	m ³ /h	m ³ /24h	m ³ /h			
TBW32L	2,8	67,2	0,9÷1,4			
TBW33L	4,2	100,8	1,4÷2,1			
TBW34L	5,3	127,2	1,8÷2,7			
TBW36L	7,4	177,6	2,5÷3,7			
TBW38L	9,4	225,6	3,1 ÷4,7			
TBW39L	11,5	276	3,8 ÷5,8			
TBW310L	12,6	302,4	4,2÷6,3			
TBW312L	14,4	345,6	4,8÷7,2			
Model	Pump motor nominal power (kW)	Feed Voltage (V) Three-phase	Membrane number	Membrane type		
				Diameter	Length	
TBW32L	4 ÷7,5	380	2	8"	40"	
TBW33L	4 ÷7,5	380	3	8"	40"	
TBW34L	4÷7,5	380	4	8"	40"	
TBW36L	4 ÷7,5	380	6	8"	40"	
TBW38L	4÷7,5	380	8	8"	40"	
TBW39L	7,5÷15	380	9	8"	40"	
TBW310L	7,5÷15	380	10	8"	40"	
TBW312L	7,5÷15	380	12	8"	40"	

Model	Connections			Dimensions		
	Inlet (PVC)	Production (PVC)	Drain (PVC)	Length (cm)	Width (cm)	Height (cm)
TBW315L	Union Ø90	Union Ø75	Union Ø63	650	70	180
TBW316L	Union Ø90	Union Ø75	Union Ø63	550	70	180
TBW318L	Union Ø90	Union Ø75	Union Ø63	750	80	180
TBW320L	Union Ø110	Union Ø75	Union Ø63	550	100	180
TBW324L	Union Ø110	Union Ø90	Union Ø75	550	100	180
TBW330L	Union Ø110	Union Ø90	Union Ø75	650	100	180
TBW336L	Union Ø125	Union Ø110	Union Ø90	750	100	180
TBW340L	Union Ø125	Union Ø110	Union Ø90	550	100	220
Model	Maximum production		Usual Rejection			
	m ³ /h	m ³ /24h	m ³ /h			
TBW315L	18	432	6÷9			
TBW316L	18,8	451.2	6,3÷9,4			
TBW318L	22	528	7,3÷11			
TBW320L	24,5	588	8,2 ÷12,3			
TBW324L	30	720	10 ÷15			
TBW330L	37,5	900	12,5 ÷18,8			
TBW336L	45	1080	15÷22,5			
TBW340L	52	1248	17,3÷26			
Model	Pump motor nominal power (kW)	Feed Voltage (V) Three-phase	Membrane number	Membrane type		
				Diameter	Length	
TBW315L	7,5÷15	380	15	8"	40"	
TBW316L	7,5÷15	380	16	8"	40"	
TBW318L	7,5÷15	380	18	8"	40"	
TBW320L	11÷18,5	380	20	8"	40"	
TBW324L	15÷30	380	24	8"	40"	
TBW330L	15÷30	380	30	8"	40"	
TBW336L	15÷30	380	36	8"	40"	
TBW340L	18,5÷37	380	40	8"	40"	